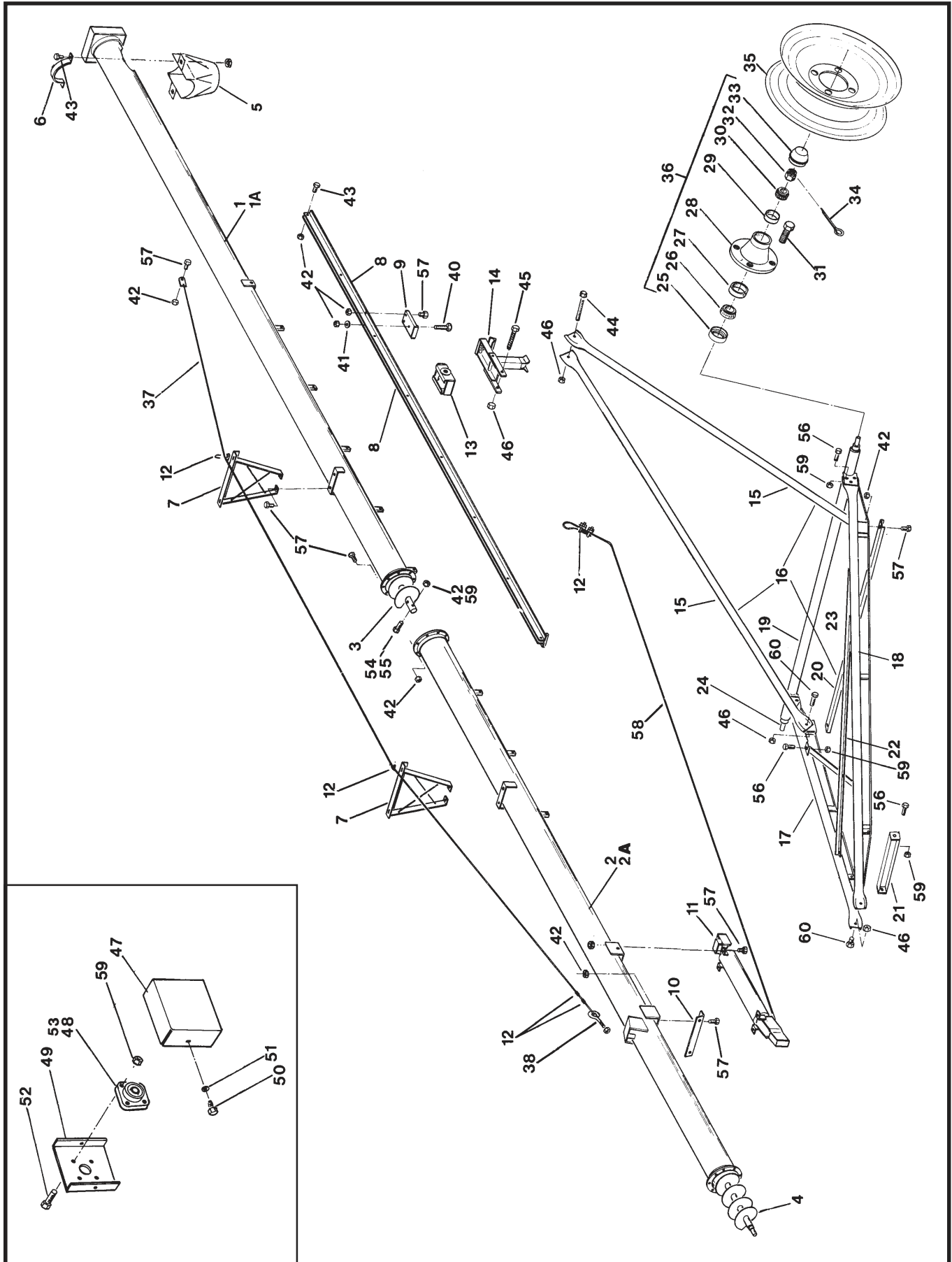


TR-AUGER BOOT / HOPPER

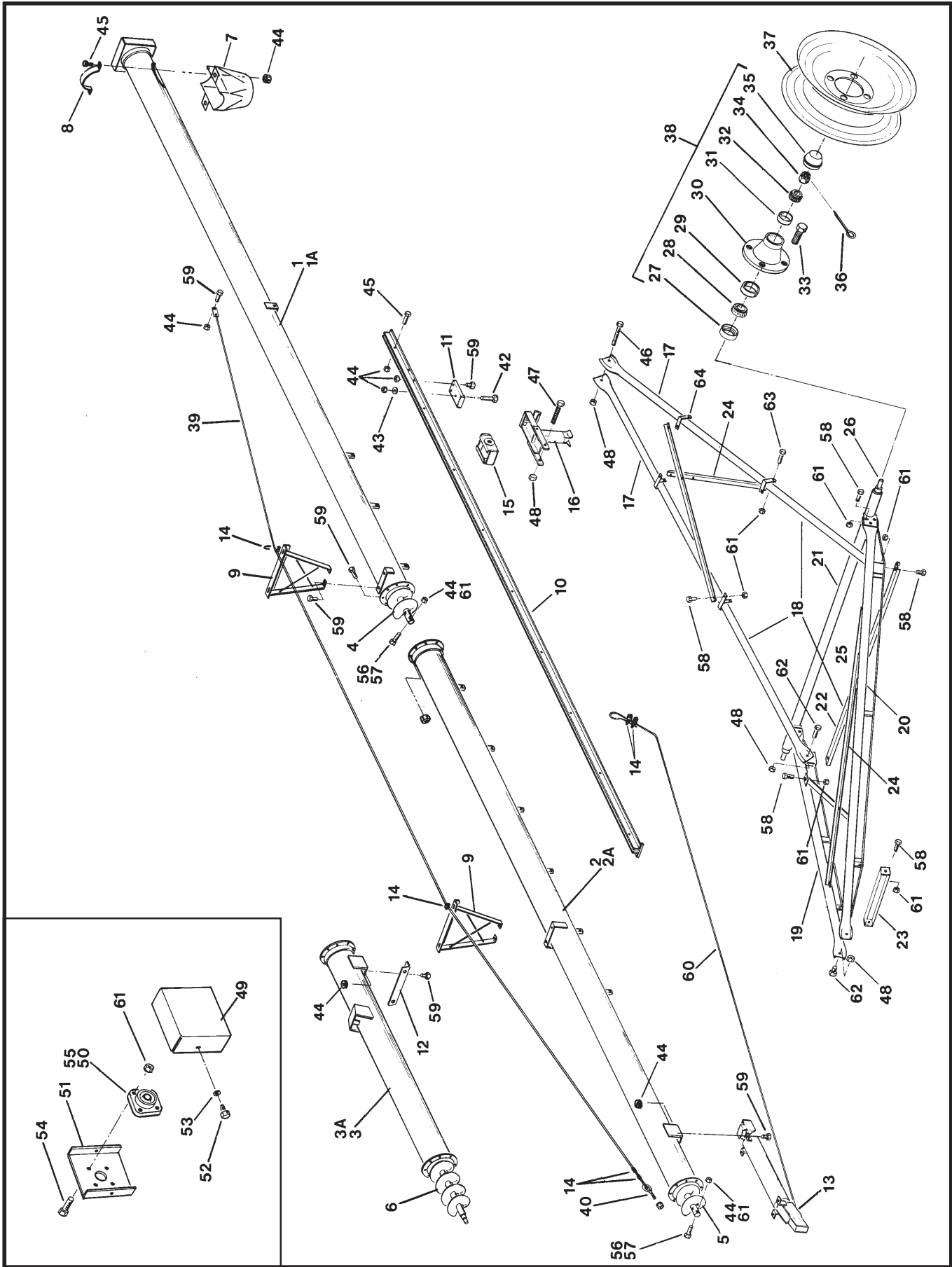
Description	Page
TR80 / TR100 x 51' basic auger.....	C2-3
TR80 / TR100 x 61' basic auger.....	C4-5
TR80 / TR100 x 71' basic auger.....	C6-7
TR Swing hopper	C8-9
TR-Boot / hopper liftarm assembly	C10
TR-Hydraulic lift cylinder	C11
TR-Reversing kit A115	C12

TR-AUGER AUGER/BOOT/HOPPER	C
-------------------------------	----------

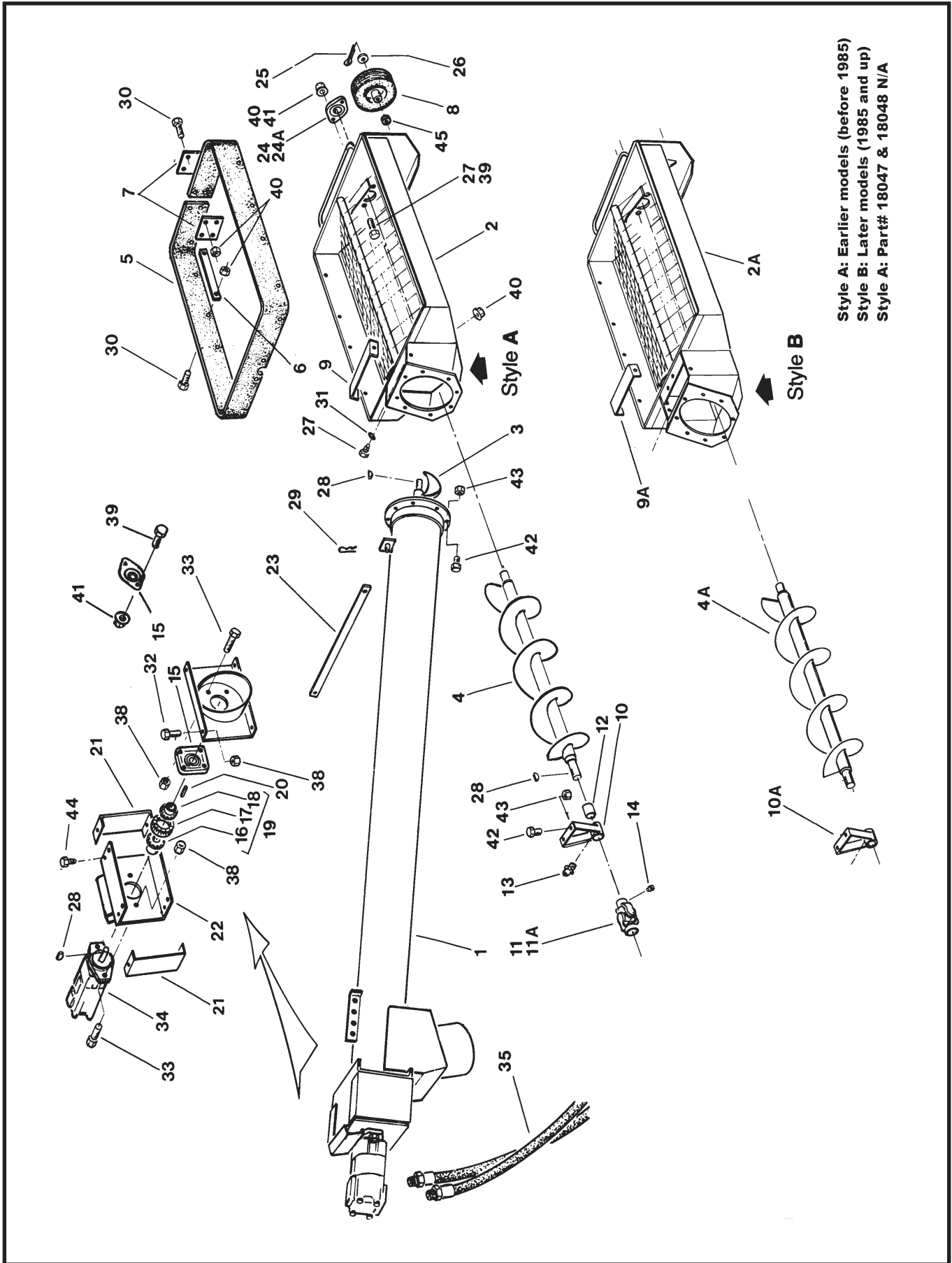
TR80, TR100 - 51' Basic Auger



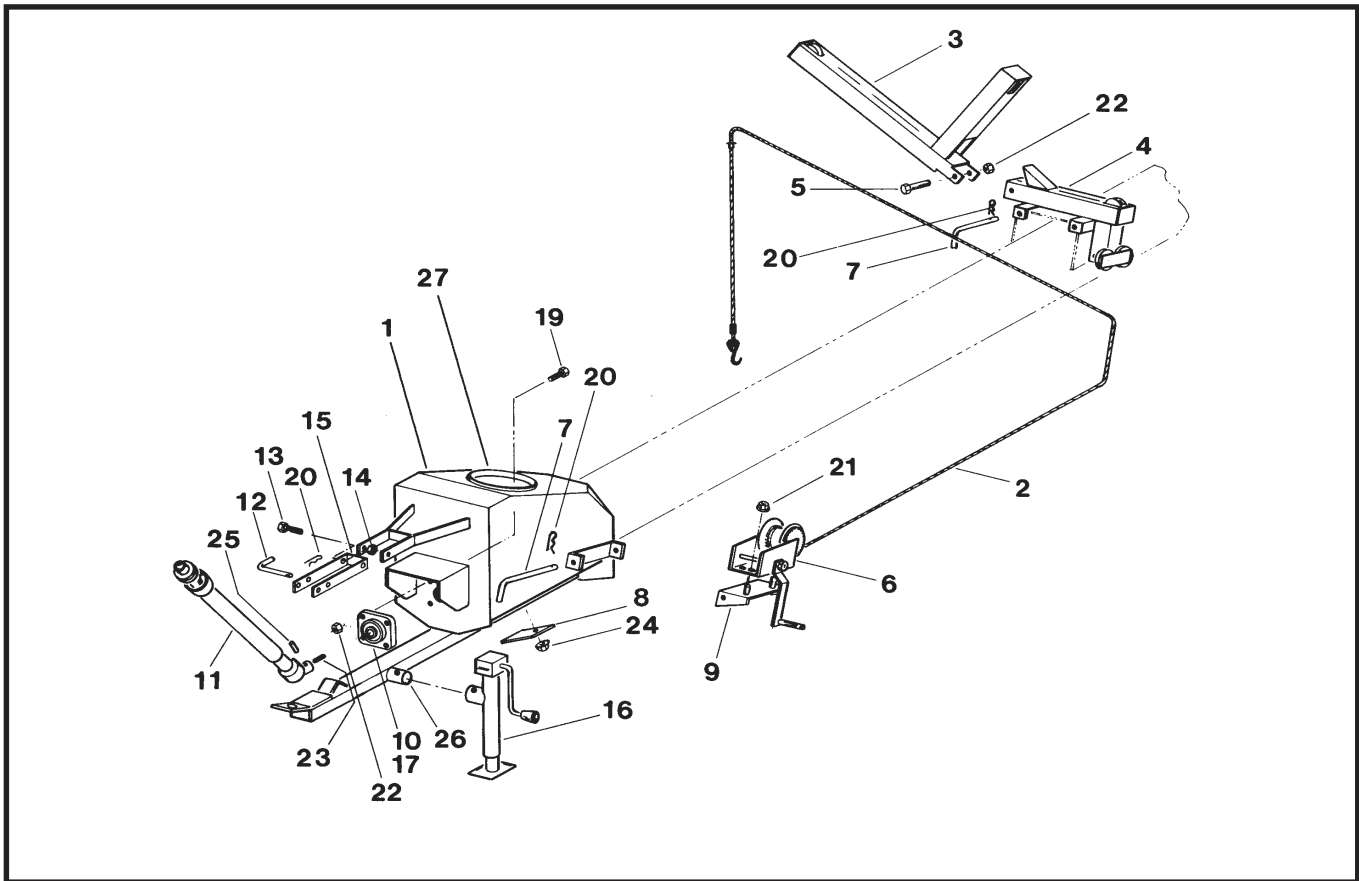
TR80, TR100 - 61' Basic Auger



TR Swing Hopper

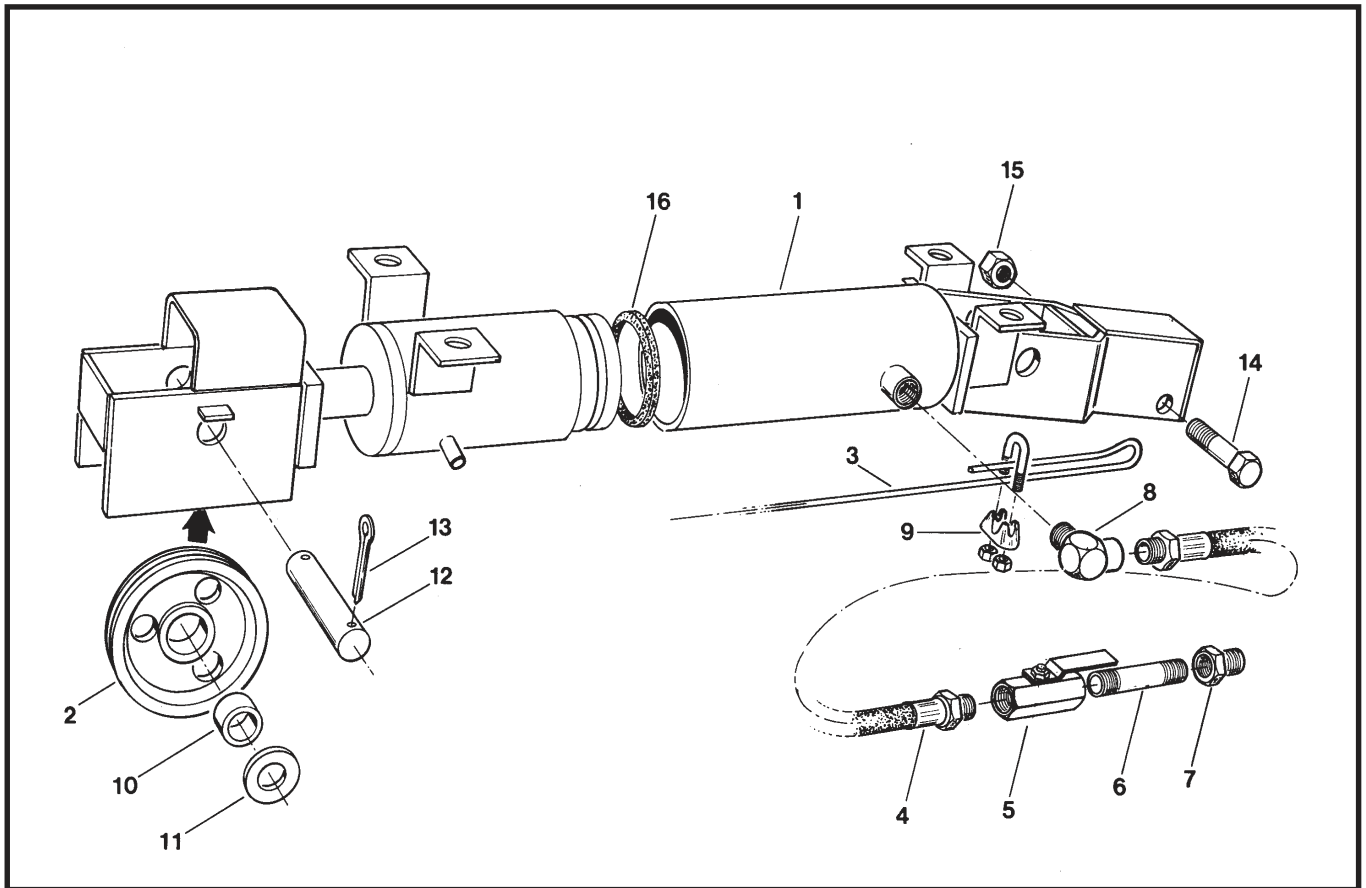


TR Boot / Hopper Liftarm Assembly



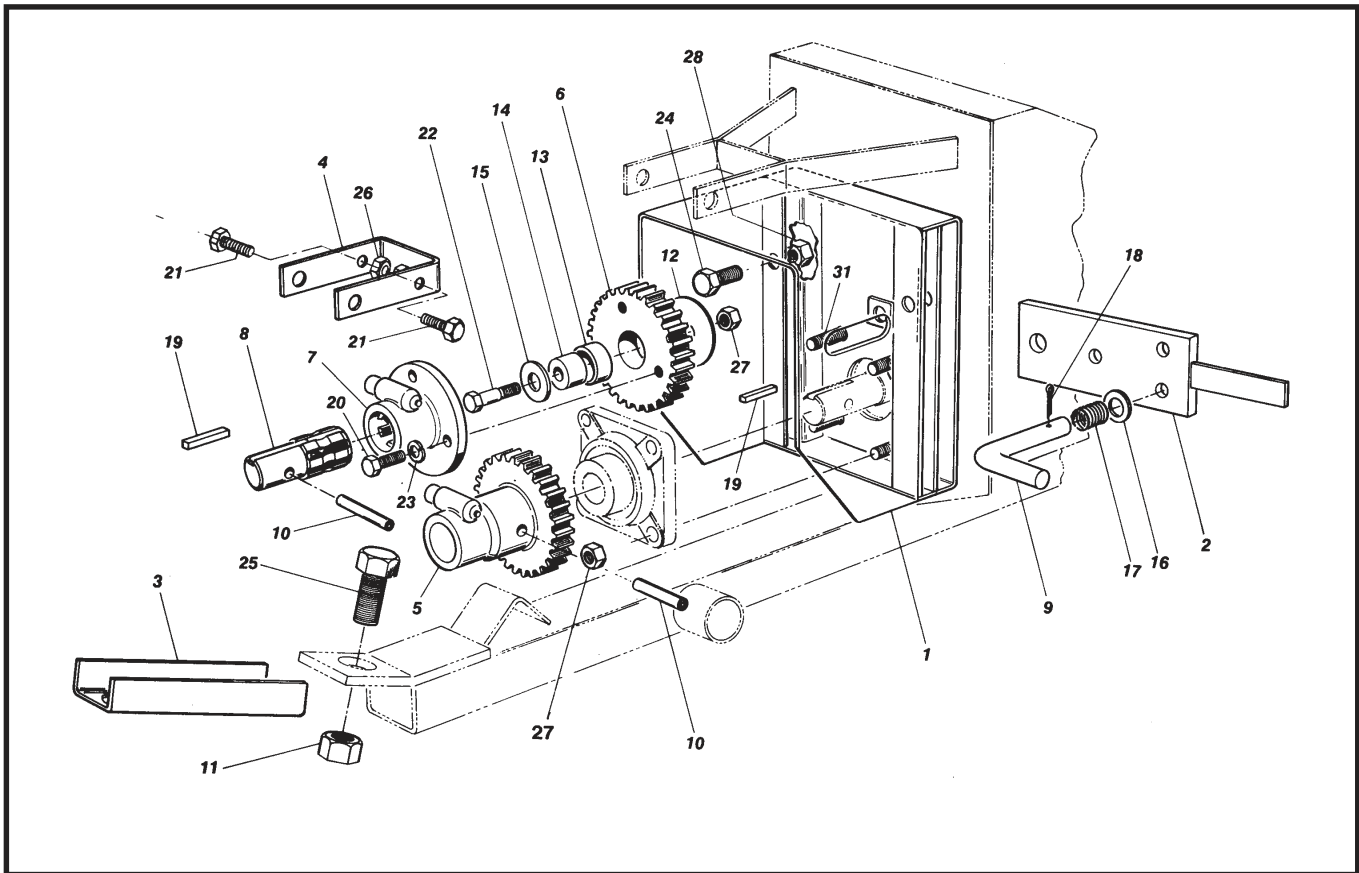
REF. NO.	PART NO.		PARTS DESCRIPTION	NO. REQ'D
	TR80	TR100		
1	18069	18070	Boot, with rings/shield, less bearing	1
2	18071	18071	Cable, hopper lift	1
3	18072	18072	Hopper lift arm	1
4	18073	18073	Hopper lift base	1
5	18092	18092	Bolt, 1/2" - 13 x 3-1/2", grade 2	X
6	19141	19141	Winch, standard 5:1 ratio	1
7	18074	18074	Mount pin, less hairpin	3
8	18075	18075	Clean-out plate	1
9	18076	18076	Winch mount	1
10	19567	19567	1-1/4" bearing, 4 bolt	1
11	18484	18484	Constant velocity PTO-shaft	1
12	19648	19648	PTO saddle pin, less hairpin	1
13	19542	19542	Bolt, 7/16" - 14 x 1", grade 5	1
14	19598	19598	Locknut, 7/16" - 14	1
15	18486	18486	Saddle extension, CV - PTO	1
16	18080	18080	Jack, sidewinder	1
17	18852	18852	1-1/4" Bearing, less flange	X
18	---	---		
19	19974	19974	Bolt, 1/2" - 13 x 1-3/4", grade 2	X
20	19463	19463	Hairpin	X
21	19596	19596	Locknut, 3/8" - 16	X
22	19599	19599	Locknut, 1/2" - 13	X
23	19606	19606	Square key, 1/4" x 1-1/2"	X
24	19595	19595	Washer locknut, 5/16" - 18	X
25	18079	18079	Roll pin, 5/16" x 2"	X
26	18116	18116	Pipe mount, weld-on	X
27	18551	18552	Boot rings with pins	

TR Hydraulic Lift Cylinder



REF. NO.	PART NO.			PARTS DESCRIPTION	NO. REQ'D
	TR51	TR61	TR71		
1	19915	19916	19917	Hydraulic cylinder,	—
2	19918	19918	19918	Pulley, 5-1/2" dia., w/bushing	6
3	18042	—	—	Cable, 5/16" x 55' 6" long	1
3	—	18043	—	Cable, 5/16" x 64' 6" long	1
3	—	—	18044	Cable, 5/16" x 75' 6" long	1
4	18081	—	—	Hydraulic hose, 3/8" x 171" long	1
4	—	18082	—	Hydraulic hose, 3/8" x 195" long	1
4	—	—	18083	Hydraulic hose, 3/8" x 216" long	1
5	18084	18084	18084	Shut-off valve, 3/8"	1
6	18085	18085	18085	Pipe nipple, 3/8" x 4-3/4" long	1
7	18086	18086	18086	Reducer bushing, 3/8" x 1/2"	1
8	18087	18087	18087	Street elbow, 3/8"	1
9	19333	19333	19333	Cable clamp, 5/16"	2
10	18088	18088	18088	Bushing, 1" x 3/4" long	1
11	18097	18097	18097	Rim washer, 1"	8
12	18089	18089	18089	Pin, 1"	2
13	18098	18098	18098	Cotter pin, 1/4" x 1-3/4",	x
14	18093	18093	18093	Bolt, 5/8" - 11 x 3-1/2", grade 5	x
15	19600	19600	19600	Locknut, 5/8" - 11	x
16	18542	18542	18542	Cylinder. cup (Can. Tool & Die) 4" nom.	1
16	18543	18543	18543	Cylinder. cup (Monarch) 4" nom.	1

TR Reversing Kit A115



REF. NO.	PART NO.	PARTS DESCRIPTION	NO. REQ'D
1	18169	Housing	1
2	18170	Gear mount plate & handle	1
3	18171	Tow bar extension	1
4	18172	PTO saddle extension	1
5	18173	Lower splined gear	1
6	18174	Upper gear	1
7	18175	Upper splined hub	1
8	18178	Splined shaft adaptor	1
9	18177	Locking pin	1
10	18079	Roll pin, 5/16" x 2"	1
11	19601	Locknut, 3/4" - 10	1
12	18178	Washer, 18 ga. x 1" x 2-1/2"	1
13	18179	Oilite bushing, 1" I.D. x 1" long	1
14	18180	Upper gear shaft	1
15	18181	Washer, 1/8" x 1/2" x 1-1/2"	1
16	18182	1/2" rim washer	1
17	18183	Spring	1
18	18156	Cotter pin, 3/32" x 1"	1
19	19606	Square key, 1/4" x 1-1/2"	2
20	19975	Bolt, 3/8" - 16 x 1-1/4", grade5	3
21	19542	Bolt, 7/16" - 14 x 1", grade 5	2
22	19976	Bolt, 1/2" - 13 x 2-1/2", grade8	1
23	19604	Lockwasher, 3/8"	3
24	19977	Bolt, 5/8" - 11 x 1-3/4", grade 5	1
25	19978	Bolt, 3/4" - 10 x 3", grade 5	1

REF. NO.	PART NO.	PARTS DESCRIPTION	NO. REQ'D
26	19598	Locknut, 7/16" - 14	2
27	19599	Locknut, 1/2" - 13	1
28	19600	Locknut, 5/8" - 11	1
29	—		
30	—		
31	19974	Bolt, 1/2" - 13 x 1-3/4", grade 2	X