

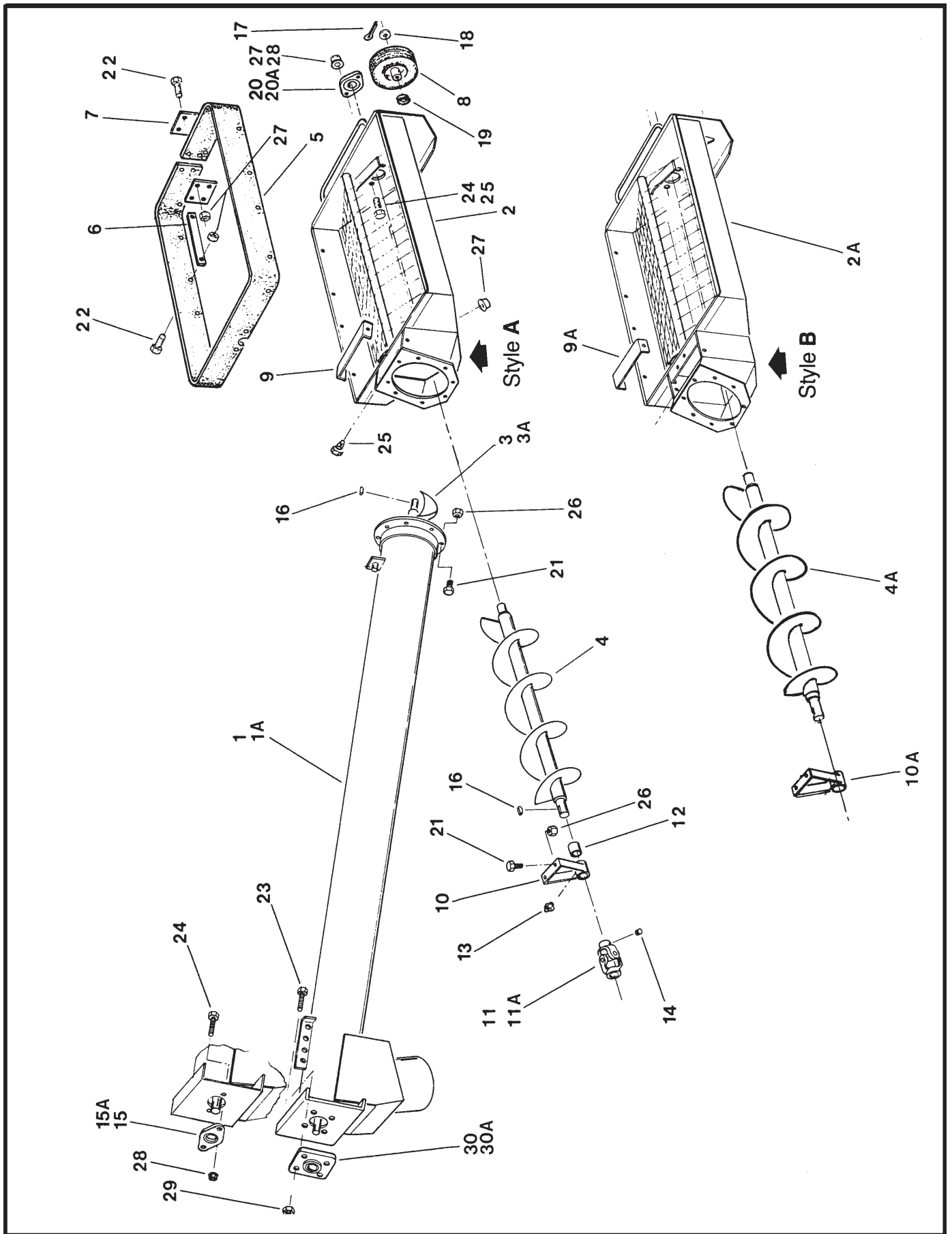
OPTIONAL EQUIPMENT

Description	Page
Inclined hopper, H08-6/9 and H10-6/9	F2-3
Straight hopper, SWH	F4
Swivel arc kit, A114	F5
Wheel kit, H08-4, H10-4 and H13-4	F5
Inclined hopper, S08-6/9, S10-6/9 and S13-10	F6
W & WR80-56-71', W & WR100 A202 EMD-Speed Reducer	F7
A197 Hydraulic Winch, All W & WR to 100 x 71', W 130-41'	F8
MK Series Augers - MK Powerswing	F9
Portable Rampover	F10-11

OPTIONAL EQUIPMENT

F

Inclined Hopper H08-6/9, H10-6/9



REF. NO.	PART NO.		PART DESCRIPTION	NO. REQ'D
	8"	10"		
1	18045	18046	9' tube section, less bearing & flighting	1
1A	18527	18528	6' tube section, less bearing & flighting	1
2	18047	18048	Hopper, style A, includes ref. no. 9	1
2A	18442	18443	Hopper, style B, includes ref. no. 9A	1
3	18049	18050	Upper flighting (9' 10-1/2" / 9' 11" long)	1
3A	18529	18530	Upper flighting (6' 10-1/2" / 6' 11" long)	1
4	18051	18052	Lower flighting, style A, 3' 4-3/4" long	1
4A	18445	18447	Lower flighting, style B, 3' 10-3/4" long	1
5	18053	18053	Rubber extension	1
6	18054	18054	Attach strap	8
7	18055	18055	Connector plate	2
8	18056	18056	8" wheel	2
9	18057	18057	Cover, style A	1
9A	18448	18057	Cover, style B	1
10	18058	18059	Hanger bearing, style A, c/w bushing & grease fitting	1
10A	18444	18446	Hanger bearing, style B, c/w bushing & grease fitting	1
11	19290	19290	Universal joint, 1" round x 1" round	1
11A	19235	19235	Repair kit, universal joint	1
12	19149	19149	1" bushing	1
13	19222	19222	Grease fitting, press-in	1
14	19225	19225	Set screw, 3/8-16x3/8"	X
15	19322	—	1-1/4" bearing, 2 hole flange	1
15A	18853	—	1-1/4" bearing, less flange	1
16	19224	19224	Woodruff key, 1/4" x 1"	X
17	19271	19271	Cotter pin, 1/8" x 1-1/2"	X
18	18096	18096	Rim washer, 5/8"	X
19	18099	18099	Wheel bearing, 5/8"	X
20	19321	19322	Bearing with lock collar (check bearing)	1
20A	19243	19244	Bearing with set screw (check bearing)	X
21	19542	19542	Bolt, 7/16" - 14 x 1", grade 5	X
22	18091	18091	Bolt, 5/16" - 18 x 1", grade 2	X
23	19589	19589	Bolt, 1/2" - 13 x 1-1/2", grade 2	X
24	19540	19540	Bolt, 3/8" - 16 x 3/4", grade 2	X
25	19538	19538	Bolt, 5/16" - 18 x 3/4", grade 2	X
26	19598	19598	Locknut, 7/16" - 14	X
27	19595	19595	Washer locknut, 5/16" - 18	X
28	19596	19596	Washer locknut, 3/8" - 16	X
29	—	19599	Locknut, 1/2" - 13	
30	—	19567	1-1/4" bearing, 4 hole flange	
30A	—	18852	1-1/4" bearing, less flange	

For parts of hydraulic drive kits H08-2 (8" tubes) and H10-2 (10" tubes) see pages C8-9.

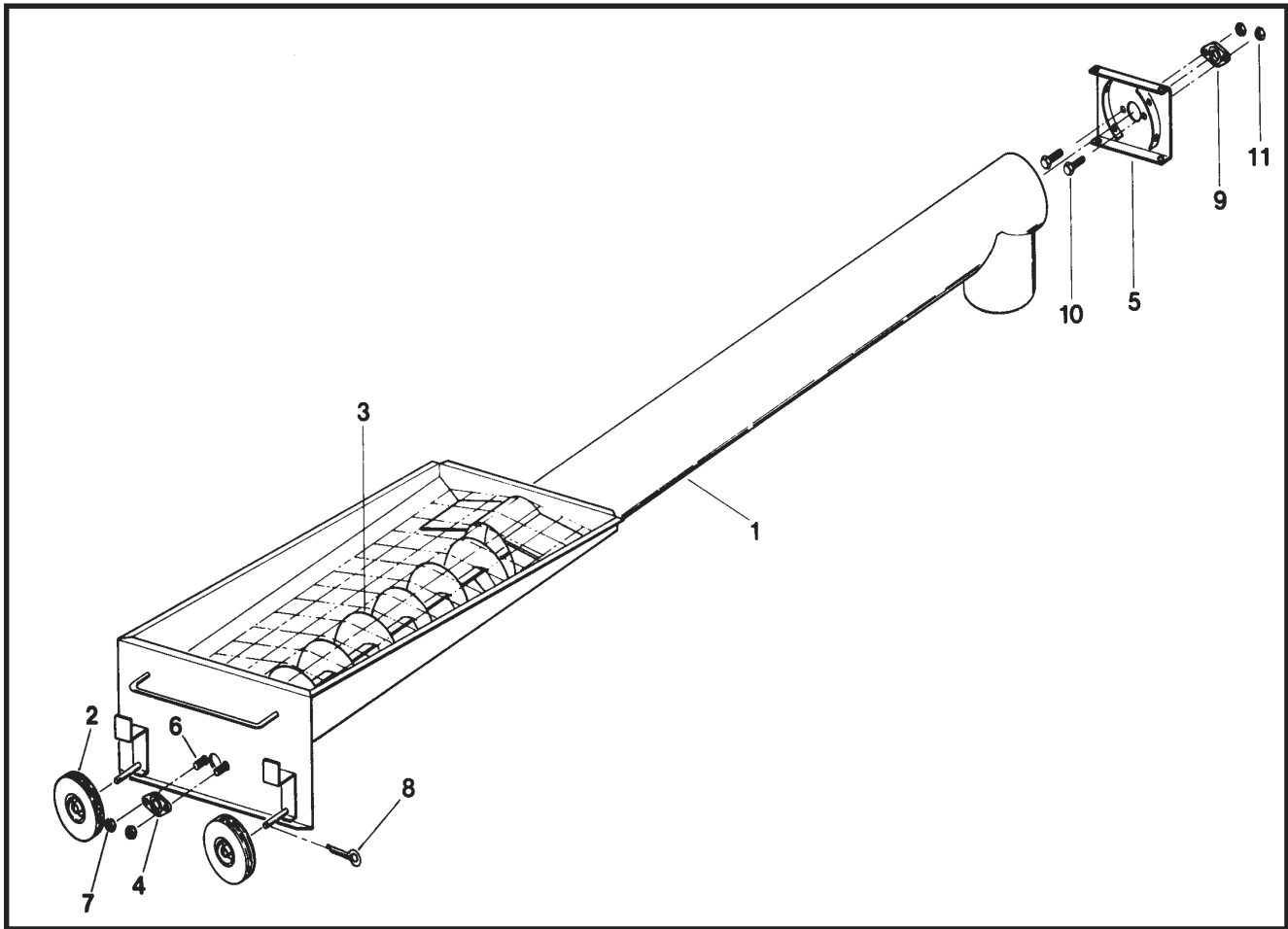
For parts of electric drive kits H08-3 (8" tubes) see page E2/ for H10-3 (10" tubes) see page E4.

Note:

Style A: Earlier models (before 1985)

Style B: Later models (1985 and later)

Straight hopper SWH



REF. NO.	PART NO.	PARTS DESCRIPTION	NO. REQ'D
1	18450	Tube and hopper only	1
2	18056	8" wheels	2
3	18451	Flighting, 9' 11" long	1
4	19321	1" bearing	1
5	18452	End plate, bolt-on	1
6	19538	Bolt, 5/16" - 18 x 3/4", grade 2	x
7	19595	Washer locknut, 5/16" - 18	x
8	19271	Cotter pin, 1/8" x 1-1/2"	x
9	19322	1-1/4" lockbearing	1
10	19540	Bolt, 3/8" - 16 x 3/4", grade 2	x
11	19596	Washer locknut, 3/8" - 16	x

For parts of hydraulic drive kits H08 - 2 (8" tubes) see pages C8-9.

For parts of electric drive kits H08-3 (8" tubes) see page E2.

Swivel Arc Kit A114

REF. NO.	PART NO.	PARTSDESCRIPTION
1	18499	Arm, L.H. (shown)
1A	18500	Arm, R.H.
2	18501	Bracket, wheel spindle
3	18487	Adjust strap
4	18489	Attach bracket
5	19547	Bolt, 7/16" - 14 x 3-1/2", grade 2 (2-1/2" frame tube)
5	19982	Bolt, 7/16" - 14 x 4", grade 2 (3" frame tube)
6	19542	Bolt, 7/16" - 14 x 1", grade 5
7	19588	Bolt, 1/2" - 13 x 1-1/4", grade 5
8	19270	Slotted nut, 3/4" - 16 (NF)
9	19997	Hex nut, 3/4" - 10
10	19598	Locknut, 7/16" - 14
11	19599	Locknut, 1/2" - 13
12	19998	Lockwasher, 3/4"
13	19271	Cotter pin, 1/8" x 1-1/2"
14	18531	Clamp bracket

ILL180

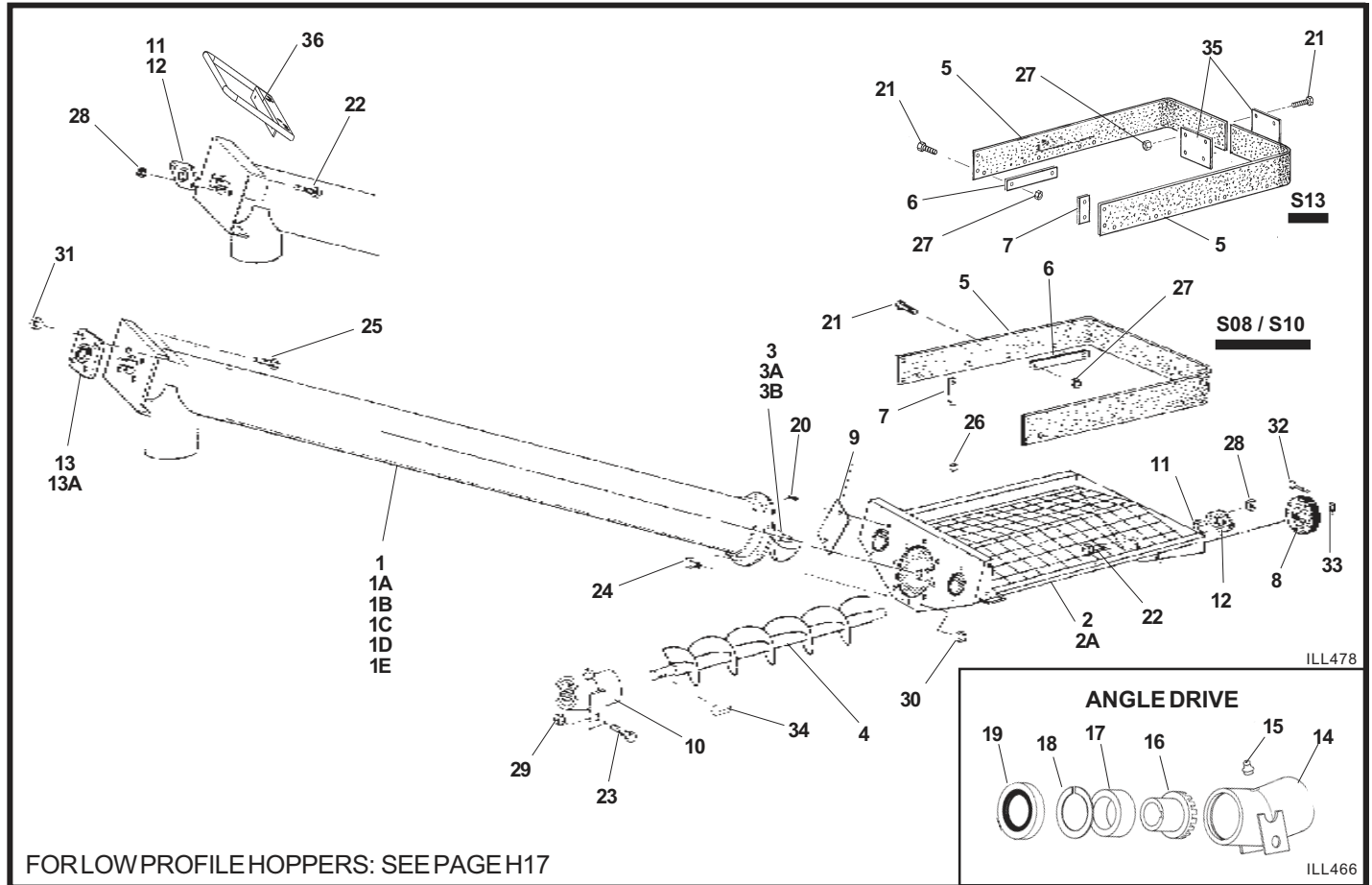
Wheel Kit H08-4, H10-4, H13-4

ILL150

REF. NO.	PART NO.			PARTSDESCRIPTION
	8"	10"	13"	
1	19970	19970	17497	Axle
2	19971	19971	17463	Brace
3	19972	19972	17503	Adjustment brace
4	19923	19973	17498	Tube halfband bracket
5	19460	19801	18987	Tube halfband
6	19967	19967	19967	8" Wheel c/w bearings
7	19969	19969	19969	Tire 4.00 x 8"
8	19968	19968	19968	3/4" Bearing
9	19542	19542	19542	Bolt, 7/16" - 14 x 1", grade 5
10	19598	19598	19598	Locknut, 7/16" - 14
11	18155	18155	18155	Cotter pin, 3/16" x 1-1/4"
12	17765	17765	17765	Hard wheel assembly, as shipped

Inclined Hopper

S08 - 6/9, S10 - 6/9, S13 - 10

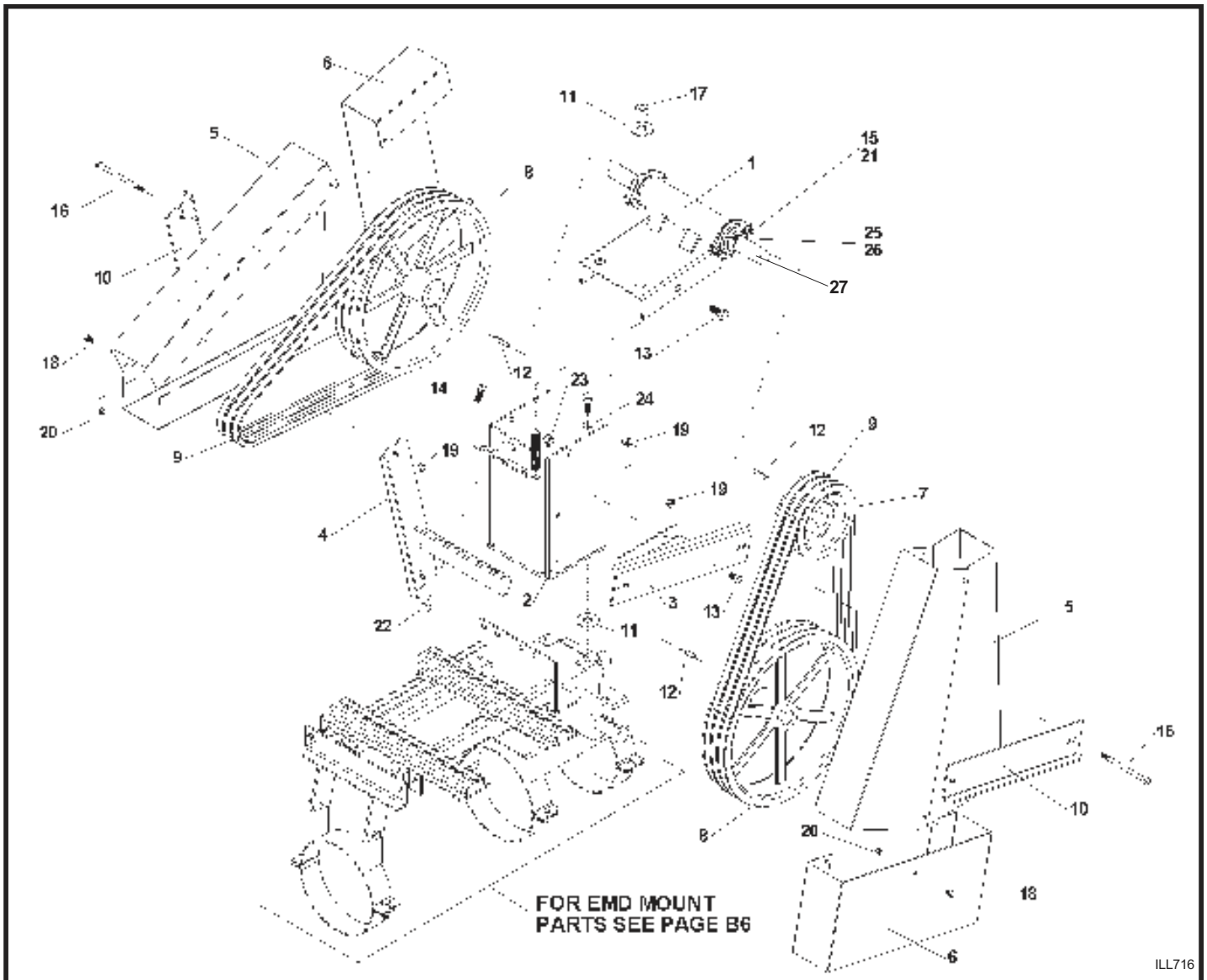


REF. NO.	PART NO.			PARTS DESCRIPTION
	S08	S10	S13	
1	--	--	17589	10' Tube section
1A	17043	17044	--	9' Tube section
1B	18527	18528	--	6' Tube section
1C	--	--	17541	10' Tube bundle, as shipped
1D	17045	17046	--	9' Tube bundle, as shipped
1E	17047	17048	--	6' Tube bundle, as shipped
2	18861	18862	18590	Hopper
2A	18863	18864	18949	Hopper assembly, as shipped
3	--	--	17590	Tube flighting, 10' tube
3A	17049	18050	--	Tube flighting, 9' tube
3B	17050	18530	--	Tube flighting, 6' tube
4	18869	18870	18591	Hopper flighting
5	18873	18873	18936	Rubber extension
6	18054	18054	18054	Attach strap, 13"
7	18878	18878	18878	Attach strap, 4-1/2"
8	18056	18056	18935	Wheel
9	18874	18874	18874	Access plate
10	18860	18860	18860	Angle drive
11	18853	18853	18853	1-1/4" Bearing, less flanges
12	18695	18695	18695	1-1/4" Flangette
13	--	19567	18518	Bearing assembly
13A	--	18852	17527	Bearing insert only
14	18942	18942	18942	Housing
15	19222	19222	19222	Grease fitting
16	18943	18943	18943	Gear
17	18944	18944	18944	Bushing

REF. NO.	PART NO.			PARTS DESCRIPTION
	S08	S10	S13	
18	18945	18945	18945	Retaining ring
19	18946	18946	18946	Seal
20	19537	19537	19537	Bolt, 1/4" - 20 x 1/2", grade 5
21	19538	19538	19538	Bolt, 5/16" - 18 x 3/4", grade 2
22	19540	19540	19540	Bolt, 3/8" - 16 x 3/4", grade 2
23	18955	18955	18955	Bolt, 3/8" - 16 x 1", grade 2
24	19542	19542	18698	Bolt, 7/16" - 14 x 1 1/4", grade 5
25	--	19589	--	Bolt, 1/2" - 13 x 1-1/2", grade 2
25	--	--	19977	Bolt, 5/8" - 11 x 1-3/4", grade 5
26	19594	19594	19594	Washer locknut, 1/4" - 20
27	19595	19595	19595	Washer locknut, 5/16" - 18
28	19596	19596	19596	Washer locknut, 3/8" - 16
29	18956	18956	18956	Locknut, 3/8" - 16
30	19598	19598	19598	Locknut, 7/16" - 14
31	--	19599	--	Locknut, 1/2" - 13
31	--	--	19600	Locknut, 5/8" - 11
32	19271	19271	19271	Cotter pin, 1/8" x 1-1/2"
33	18096	18096	18948	Rim washer
34	19224	19224	19224	Woodruff key, 1/4" x 1"
35	--	--	18055	Connector plate
36	17469	17469	17469	Handle

For parts of **hydraulic drive kits H08 - 2** (8" tubes) and **H10 - 2** (10" tubes) see pages **C8-9**.

For parts of **electric drive kits H08 - 3** (8" tubes) see page **E2** / for **H10 - 3** (10" tubes) see page **E4** / for **H13 - 3** (13" tubes) see page **E6**.

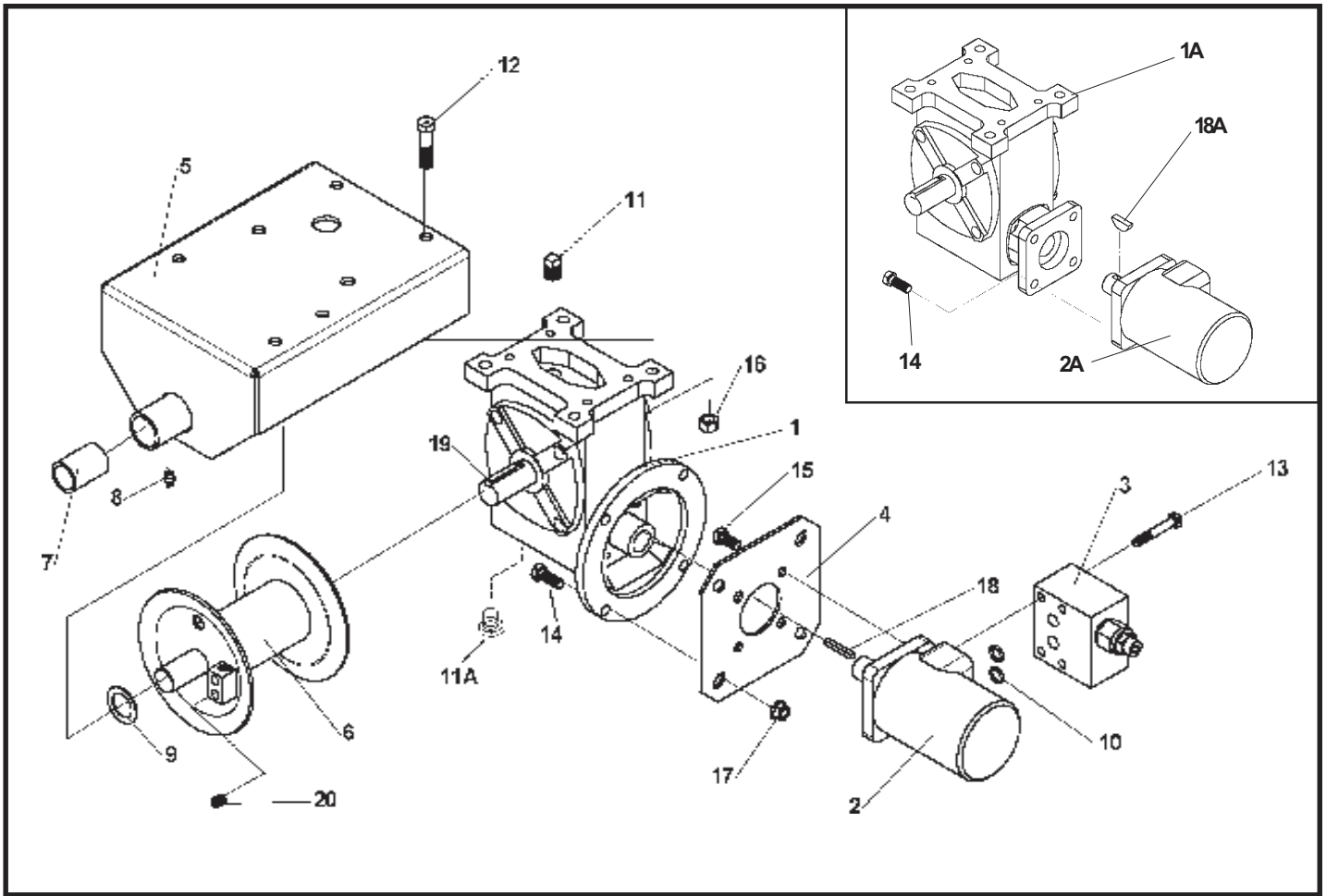


REF. NO.	PART NO.	PARTSDESCRIPTION	NO. REQ'D
1	17620	Jackshaft mount assembly	1
2	17617	Tower	1
3	17619	Pulley shield attach bracket	1
4	19931	Shield bracket (in EMD carton)	1
5	19845	Pulley shield	1
6	19930	Pulley shield extension	1
7	17622	Triple groove 6-1/2" pulley, 1-1/4" bore	1
8	19933	Triple groove 15" pulley, 1-1/4" bore	1
9	19935	Belt, B67 (3 in EMD carton)	3
10	19932	Shield attach angle	2
11	19966	Flat washer, 5/8"	3
12	19606	Sq. key, 1/4" x 1-1/2"	2
13	19588	Bolt, 1/2" - 13 x 1-1/4", grade 5	6
14	19542	Bolt, 7/16" - 14 x 1", grade 5 (in EMD carton)	2
15	19540	Bolt, 3/8" - 16 x 3/4", grade 5	2

REF. NO.	PART NO.	PARTSDESCRIPTION	NO. REQ'D
16	19936	Bolt, 5/16" - 18 x 5", grade 5	2
17	19600	Locknut, 5/8" - 11	1
18	19537	Bolt, 1/4" - 20 x 1/2", grade 2	4
19	19980	Locknut, 5/16" - 18	2
20	19594	Washer-locknut, 1/4" - 20	4
21	19596	Washer-locknut, 3/8" - 16	2
22	19598	Locknut, 7/16" - 14 (in EMD carton)	2
23	19599	Locknut, 1/2" - 13	2
24	19605	Lockwasher, 1/2"	2
25	18853	1-1/4" Bearing less flanges	2
26	18695	Bearing flange	2
27	17616	Speed reducer shaft only	1

A197 - Hydraulic Winch

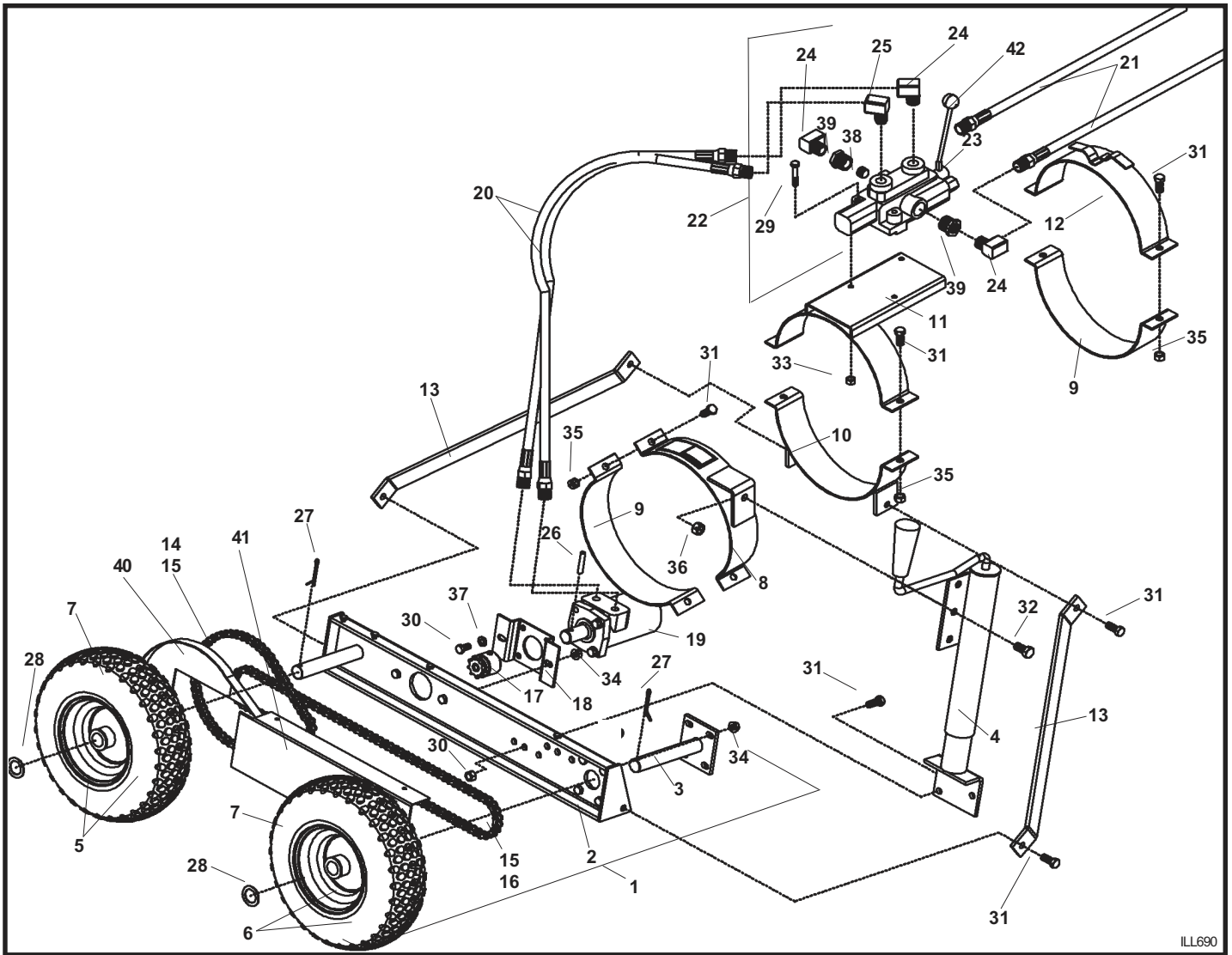
All W & WR to 100 x 71', W130-41'



REF NO.	PART NO.	PARTSDESCRIPTION	NO. REQ'D
1	--	Gearbox w/ mount plate	1
1A	17625	Gearbox w/ integral motor mount	1
2	--	Hydraulic motor 2.8 cu. in. w/7/8" shaft	1
2A	17626	Hydraulic motor 2.8 cu.in. w/1" shaft	1
3	17627	Hydraulic motor bypass valve	1
4	18349	Motor mount plate	1
5	17628	Winch frame	1
6	17629	Drum assembly	1
7	19149	Bushing, 1" ID x 1-1/4" OD Oilite	1
8	19222	Grease nipple, 5/16" press in	1
9	18097	Spacer, 1" ID x 18 ga.	X
10	18154	O - ring # 112	2
11	17638	Pipe plug, 3/8" NPT	1
11A	28329	Plastic Vent Plug, M16 x 1.5 (O-Ring: 16 x 2.4 mm)	
12	19981	Bolt, 7/16" - 14 x 1-3/4", grade 5	4
13	17631	Bolt, 5/16" - 18 x 2-1/2", grade 2	4
14	19955	Bolt, 3/8" - 16 x 1", grade 2	4
15	19540	Bolt, 3/8" - 16 x 3/4", grade 2	4
16	19598	Locknut, 7/16" - 14	4
17	19596	Washer-locknut, 3/8" - 16	4
18	17630	Square key, 3/16" x 1-3/8"	1
18A	19224	Woodruff key 1/4" x 1"	1
19	19606	Square key, 1/4" x 1-1/2"	1
20	19225	Set-screw, 3/8" - 16 x 3/8"	2
21	17072	Seal Kit	1

MK SERIES AUGERS

MK POWERSWING



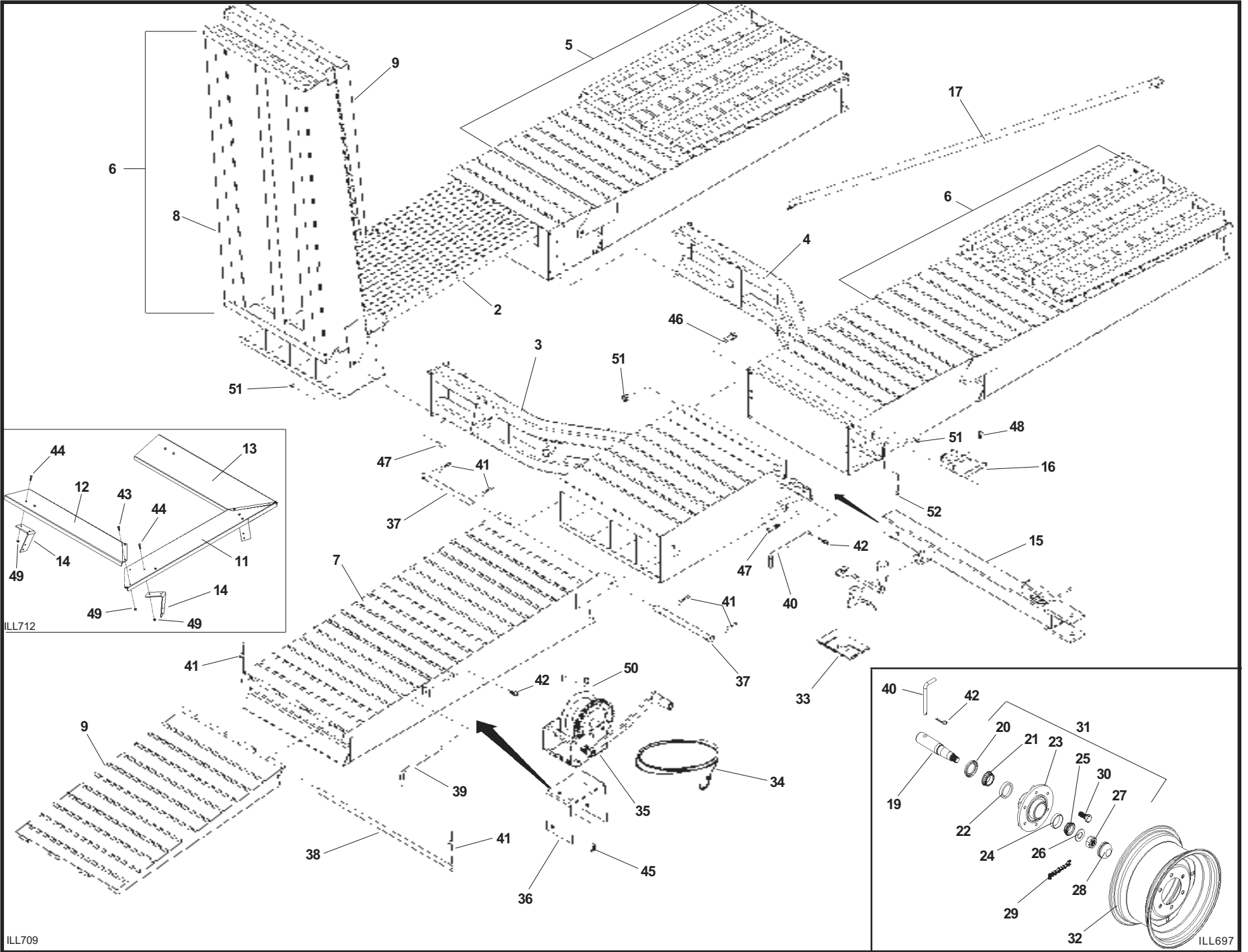
ILL690

REF. NO.	PART NO.			PARTS DESCRIPTION	NO. REQ'D
	MK80	MK100	MK130		
1	17674	17674	17674	Axle assembly, as shipped	1
2	17702	17702	17702	Main channel	1
3	17701	17701	17701	Chain adjust axle weldment	1
4	17688	17688	17688	Jack	1
5	17703	17703	17703	Wheel c/w tire - Big sprocket	1
6	17704	17704	17704	Wheel c/w tire - Small sprocket	1
7	17708	17708	17708	Tire (only)	2
8	17689	17690	17691	Jack bracket	1
9	19460	19801	18987	Tube halfband	2
10	19923	19973	17498	Frame mounting bracket	1
11	17705	17706	17707	Hydraulic valve bracket	1
12	17695	17696	17697	Hose clip bracket	1
13	17685	17685	18915	Stabilizer arm	2
14	17692	17692	17692	Chain, #40 x 59P w/ connector	1
15	17693	17693	17693	Roller chain connector only	1
16	17694	17694	17694	Chain, #40 x 107P w/ connector	1
17	17713	17713	17713	Motor sprocket	1
18	17686	17686	17686	Motor mount plate	1
19	17683	17683	17683	Hydraulic motor, 4.5 cu. inch	1
20	17710	17710	17710	Hydraulic hose, 38"	2
21	17711	17711	17711	Hydraulic hose, 173"	2

REF. NO.	PART NO.			PARTS DESCRIPTION	NO. REQ'D
	MK80	MK100	MK130		
22	17676	17676	17676	Valve assembly, as shipped	1
23	17675	17675	17675	Hydraulic control valve	1
24	17699	17699	17699	1/2" Brass elbow	3
25	17700	17700	17700	1/2" Brass elbow w/ orifice plug	1
26	17682	17682	17682	Roll pin, 5/16" x 1-1/2"	1
27	18155	18155	18155	Cotter pin, 3/16" x 1-1/4"	2
28	18097	18097	18097	Rim washer, 1" I.D.	2
29	17712	17712	17712	Bolt, 5/16" - 18 x 1-3/4", grade 2	3
30	19540	19540	19540	Bolt, 3/8" - 16 x 3/4", grade 2	4
31	19542	19542	19542	Bolt, 7/16" - 14 x 1", grade 5	12
32	19549	19549	19549	Bolt, 1/2" - 13 x 1", grade 5	1
33	19595	19595	19595	Washer locknut, 5/16" - 18	3
34	19596	19596	19596	Washer locknut, 3/8" - 16	6
35	19598	19598	19598	Locknut, 7/16" - 14	12
36	19599	19599	19599	Locknut, 1/2" - 13	1
37	19604	19604	19604	Lockwasher, 3/8"	4
38	17638	17638	17638	3/8" NPT Diverter Plug	1
39	27411	27411	27411	3/4" NPT Reducer bushing	2
40	27558	27558	27558	Sprocket guard	1
41	27559	27559	27559	Chain guard	1
42	27590	27590	27590	Valve handle only	1

PORTABLE RAMPOVER

F10



July-08

ILL709

ILL697

