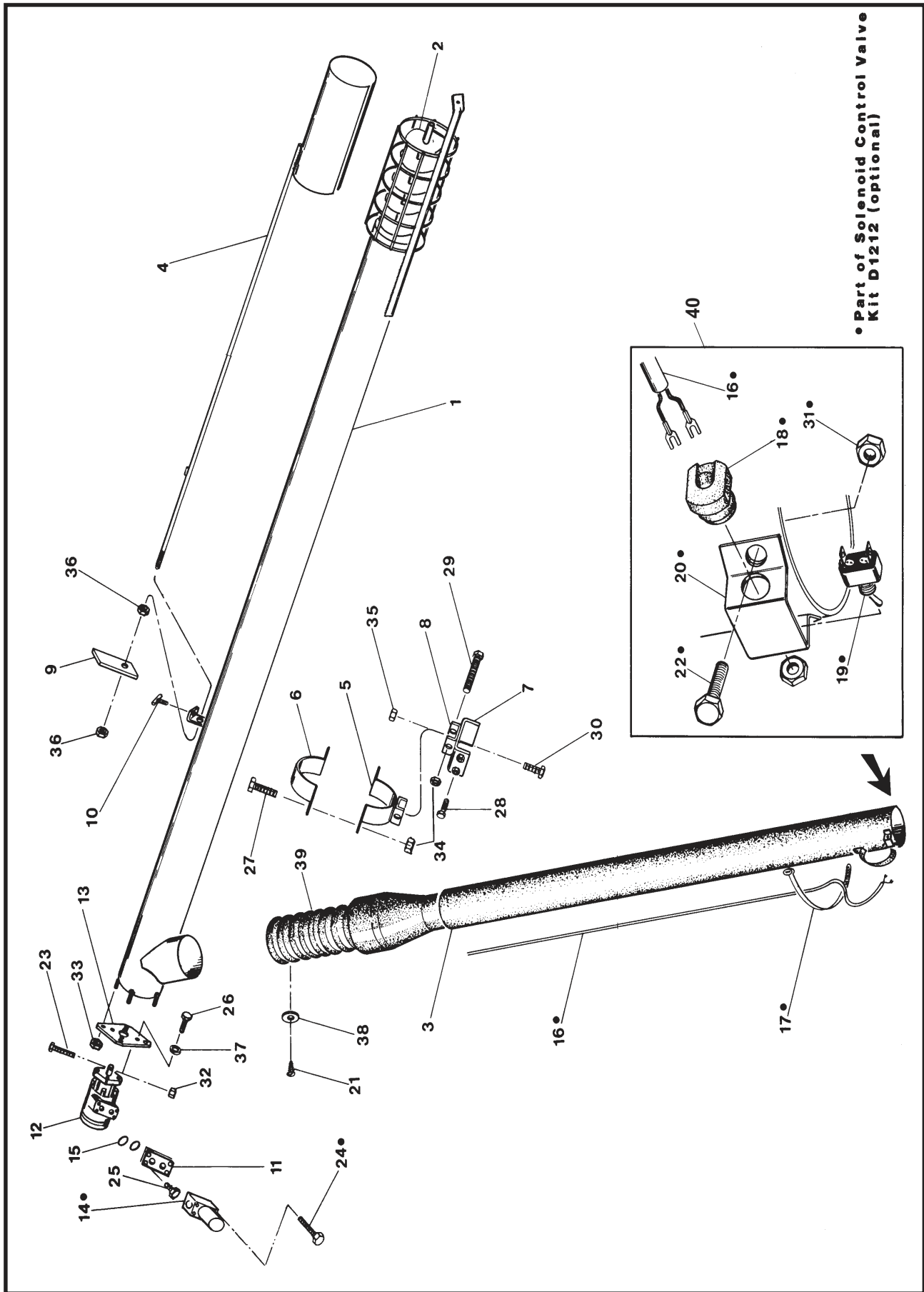


DRILL FILL / TOTE TANK FERTILIZER TANK

<u>Description</u>	<u>Page</u>
W60 - W70 - W80 x 26' basic auger	A2-3
Side mount drill fill D1106, D1606, D2106	G2-3
Rear Mount drill fill w/spring assist	G4-5
Rear mount drill fill w/manual lift, DF614	G6-7
Tote tank T505 to T510	G8-9
Rear mount drill fill w/spring assist, DF614-3	G10-11
Gravity wagon auger, GWA612-33/612-44/615-33/615-44	G12-13
Fertilizer tank DF350, DF500	G14

DRILL FILL, TOTE TANK FERTILIZER TANK	G
--	----------

Side Mount Drill Fill (Model D1106, 1606 & 2106)

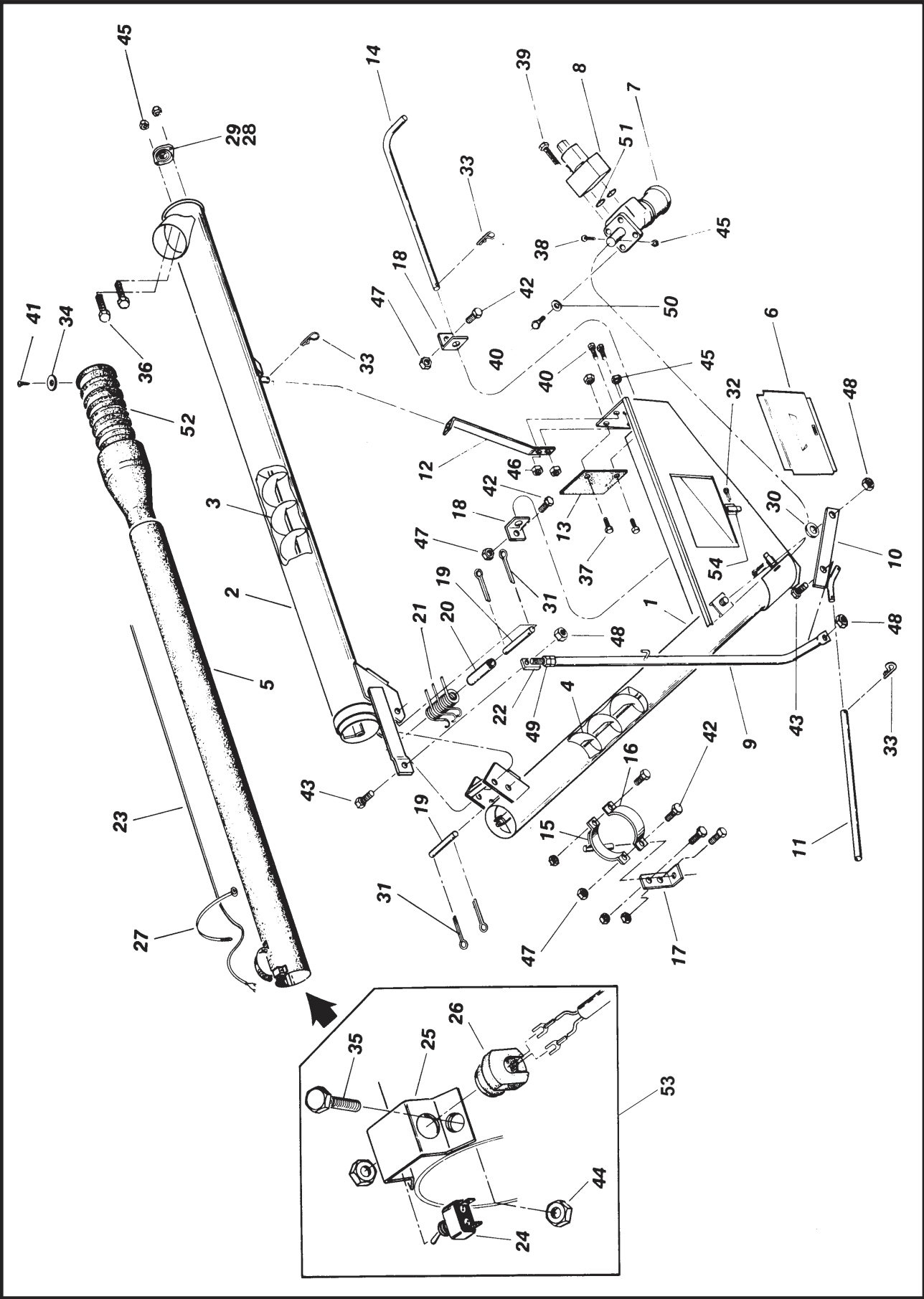


REF. NO.	PART NO.	PARTS DESCRIPTION	NO. REQ'D
1	18260	11' Tube section	1
1	18261	16' Tube section	1
1	18262	21' Tube section	1
2	18263	11' Flighting	1
2	18264	16' Flighting	1
2	18265	21' Flighting	1
3	18134	2 Section spout w/flex hose	1
4	18343	Feed control	1
5	18344	Swivel clamp	1
6	18368	Tube half band	1
7	18345	Box clamp	1
8	18346	Swivel bracket	1
9	18347	Feed control handle	1
10	19838	T-bolt	1
11	18348	Adaptor block	1
12	18136	Hydraulic motor	1
13	18349	End plate	1
14	18137	Solenoid valve	1
15	18154	O-ring#112	2
16	18350	Electrical harness	1
17	18151	Tywrap	2
18	18150	Cord grommet	1
19	18148	Toggle switch	1
20	18149	Switch bracket	1
21	19952	Self tapping screw, #14 x 3/4"	X
22	19537	Bolt, 1/4" - 20 x 1/2", grade 5	X
23	19992	Bolt, 5/16" - 18 x 2", grade 8	X
24	19965	Bolt, 5/16" - 18 x 2-3/4", grade 2	X
25	18106	Bolt, 5/16" - 18 x 1-1/4", grade 2	X
26	19540	Bolt, 3/8" - 16 x 3/4", grade 2	X
27	19542	Bolt, 7/16" - 14 x 1", grade 5	X
28	19981	Bolt, 7/16" - 14 x 1-3/4", grade 5	X
29	19982	Bolt, 7/16" - 14 x 4", grade 5	X
30	19588	Bolt, 1/2" - 13 x 1-1/4", grade 5	X
31	19594	Washer locknut, 1/4" - 20	X

REF. NO.	PART NO.	PARTS DESCRIPTION	NO. REQ'D
32	19595	Washer-locknut, 5/16" - 18	X
33	19596	Washer-locknut, 3/8" - 16	X
34	19598	Locknut, 7/16" - 14	X
35	19599	Locknut, 1/2" - 13	X
36	19602	Hex nut, 1/2" - 13	X
37	19604	Lockwasher, 3/8"	X
38	18152	Spoutclamp	X
39	18153	6" Flex hose	X
40	17476	Switch & cord assembly	
41	18351	D612 Carton, as packed	
42	17128	D1106 Tube BDL	X
43	17129	D1606 Tube BDL	X
44	17130	D2103	X

Side Mount Drill Fill (model D1106, 1606 & 2106)

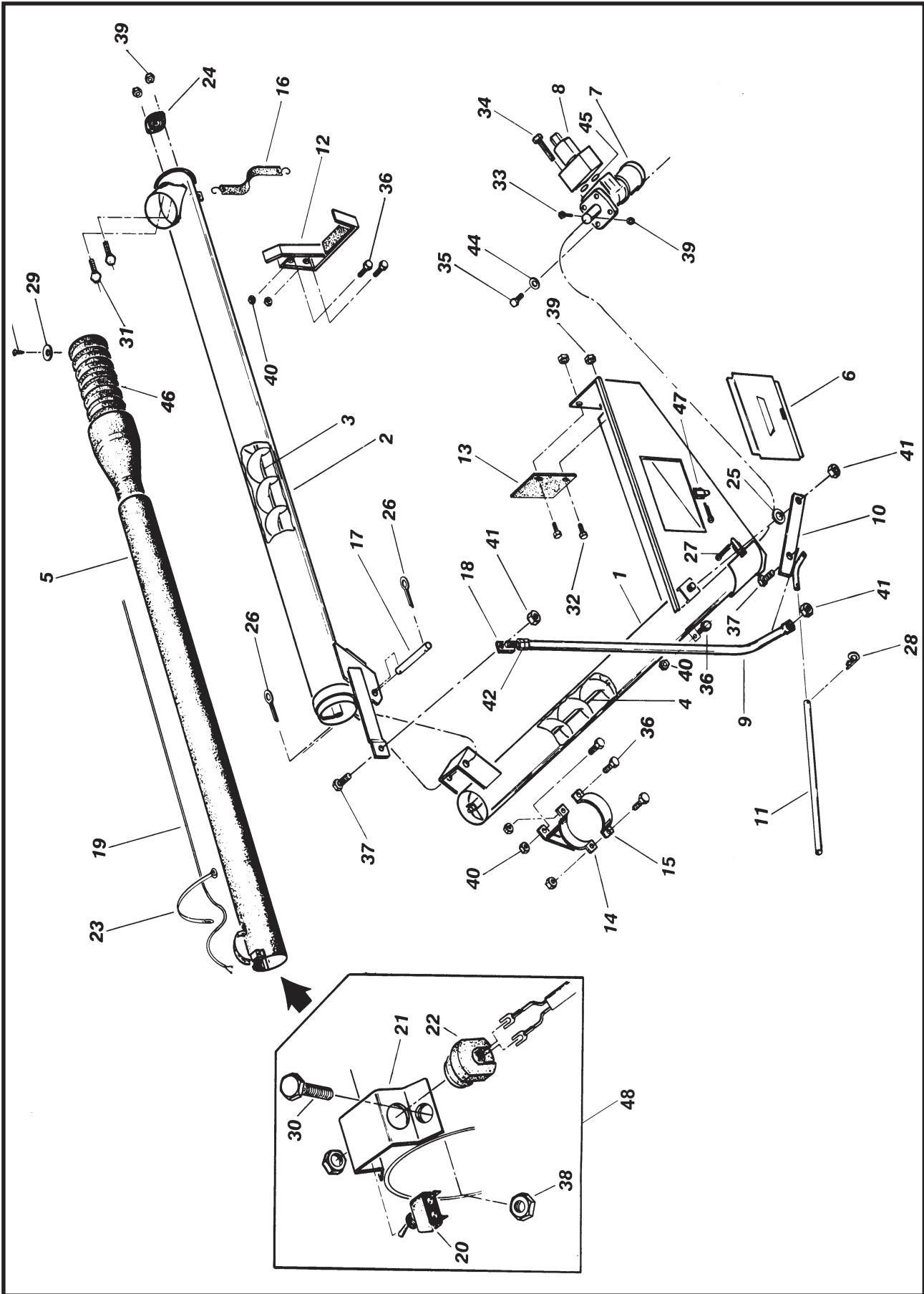
Rear Mount Drill Fill w/Spring Assist, DF614



REF. NO.	PART NO.	PARTS DESCRIPTION	NO. REQ'D
1	18157	Lower tube and hopper	1
2	18158	Upper tube	1
3	18367	Upper flighting	1
4	18133	Lower flighting	1
5	18134	2 Section spout w/flex hose	1
6	18135	Dump cover	1
7	18136	Hydraulic motor	1
8	18137	Solenoid valve	1
9	18138	Lift arm	1
10	18139	Lift arm bracket	1
11	18140	Handle	1
12	18159	Transport bracket	1
13	18142	Skirting	2
14	18160	Mount pin	1
15	18161	Mount clamp	1
16	19022	Tube half band	1
17	18162	Hanger bracket	1
18	18163	Mount bracket	2
19	18145	Pivot pin	2
20	18164	Sleeve	1
21	18165	Spring	3
22	18146	Adjust bolt	1
23	18147	Electrical harness	1
24	18148	Toggle switch	1
25	18149	Switch bracket	1
26	18150	Cord Grommet	1
27	18151	Tywrap	7
28	18817	1" Bearing, less flanges	1
29	19321	1" Flangette bearing	1
30	19966	Washer, 5/8"	1
31	18155	Cotter pin, 3/16" x 1-1/4"	4
32	18156	Cotter pin, 3/32" x 1"	2
33	19463	Hitch pin #10	2
34	18152	Spout clamp	3
35	19537	Bolt, 1/4" - 20 x 1/2", grade 5	2

REF. NO.	PART NO.	PARTS DESCRIPTION	NO. REQ'D
36	19538	Bolt, 5/16" - 18 x 3/4", grade 2	2
37	18091	Bolt, 5/16" - 18 x 1", grade 2	2
38	19539	Bolt, 5/16" - 18 x 2", grade 2	1
39	19965	Bolt, 5/16" - 18 x 2-3/4", grade 2	2
40	19540	Bolt, 3/8" - 16 x 3/4", grade 2	8
41	19952	Self tapping screw, #14 x 3/4"	3
42	19542	Bolt, 7/16" - 14 x 1", grade 5	6
43	19590	Bolt, 5/8" - 11 x 1-1/2", grade 5	1
44	19594	Washer locknut, 1/4" - 20	2
45	19595	Washer locknut, 5/16" - 18	7
46	19596	Washer locknut, 3/8" - 16	2
47	19598	Locknut, 7/16" - 14	6
48	19600	Locknut, 5/8" - 11	3
49	19864	Hex nut, 5/8" - 11	1
50	19604	Lockwasher, 3/8"	4
51	18154	O-ring # 112	2
52	18153	6" Flex hose	x
53	17475	Switch & cord assembly	
54	18168	Toggle latch	x
—	18352	DF614 carton, as packed	

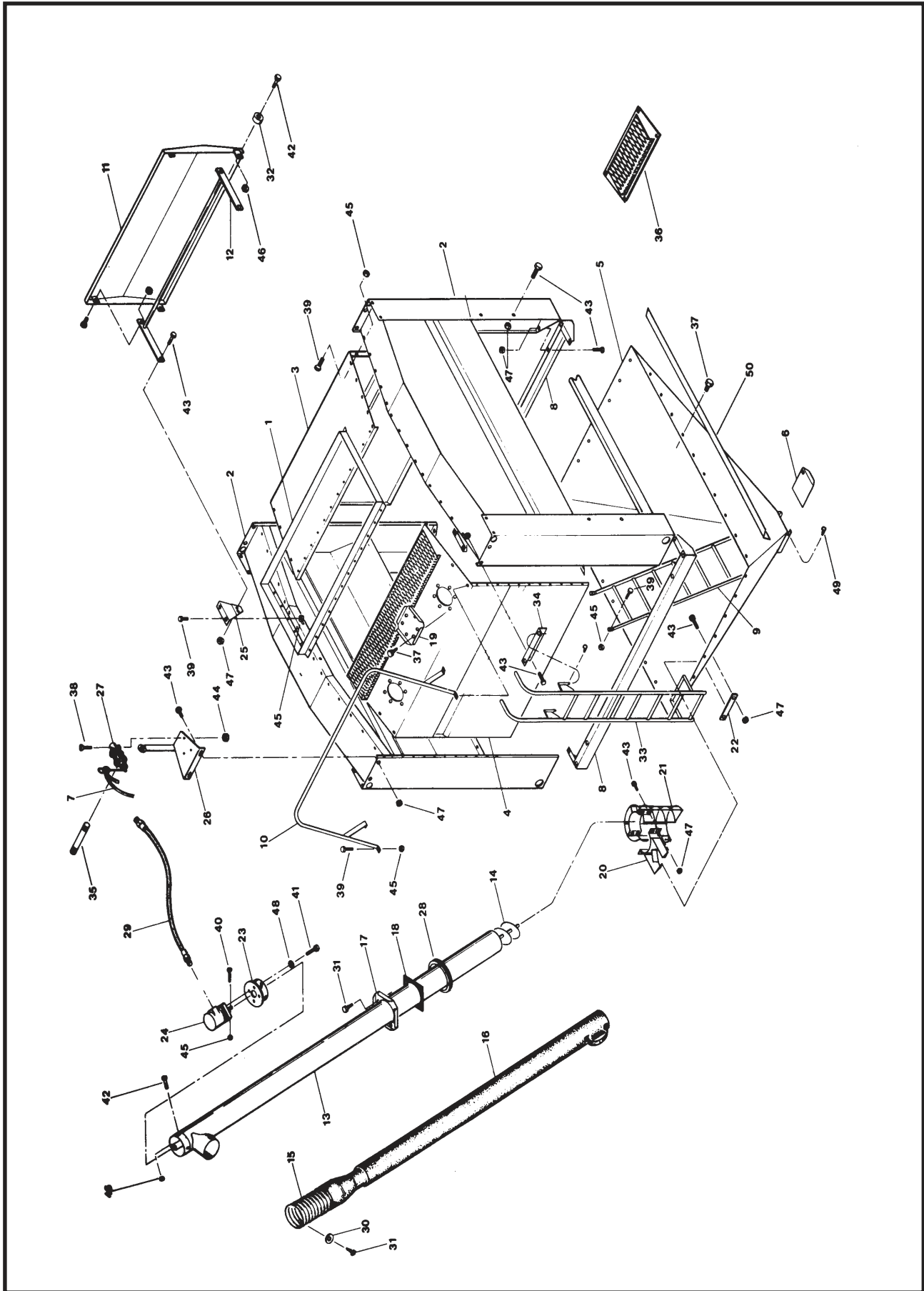
Rear Mount Drill Fill w/Manual Lift, DF614



REF. NO.	PART NO.	PARTS DESCRIPTION	NO. REQ'D
1	18130	Lower tube & hopper	1
2	18131	Upper tube	1
3	18132	Upper flighting	1
4	18133	Lower flighting	1
5	18134	2 Section spout w/flex hose	1
6	18135	Dump cover	1
7	18136	Hydraulic motor	1
8	18137	Solenoid valve	1
9	18138	Lift arm	1
10	18139	Lift arm bracket	1
11	18140	Handle	1
12	18141	Transport saddle	1
13	18142	Skirting	2
14	18143	Mount clamp	1
15	19022	Tube half band	1
16	18144	Tarp strap	1
17	18145	Pivot pin	1
18	18146	Adjust bolt	1
19	18147	Electrical harness	1
20	18148	Toggle switch	1
21	18149	Switch bracket	1
22	18150	Cord grommet	1
23	18151	Tywrap	7
24	19321	1" Flangette bearing	1
25	19966	Washer, 5/8"	1
26	18155	Cotter pin, 3/16" x 1-1/4"	2
27	18156	Cotter pin, 3/32" x 1"	2
28	19463	Hitch pin #10	1
29	18152	Spout clamp	3
30	19537	Bolt, 1/4" - 20 x 1/2", grade 5	2
31	19538	Bolt, 5/16" - 18 x 3/4", grade 2	2
32	18091	Bolt, 5/16" - 18 x 1", grade 2	4
33	19992	Bolt, 5/16" - 18 x 2", grade 2	1
34	19965	Bolt, 5/16" - 18 x 2-3/4", grade 2	4
35	19540	Bolt, 3/8" - 16 x 3/4", grade 2	4

REF. NO.	PART NO.	PARTS DESCRIPTION	NO. REQ'D
36	19542	Bolt, 7/16" - 14 x 1", grade 5	7
37	19590	Bolt, 5/8" - 11 x 1-1/2", grade5	2
38	19594	Washer locknut, 1/4" - 20	2
39	19595	Washer locknut, 5/16" - 18	7
40	19598	Locknut, 7/16" - 14	7
41	19600	Locknut, 5/8" - 11	3
42	19963	Hex nut, 5/8" - 11	1
43	19952	Self tapping screw, #14 x 3/4"	3
44	19604	Lockwasher, 3/8"	4
45	18154	O-ring #112	2
46	16153	6" Flex hose	X
47	16166	Toggle latch	X
48	17475	Switch & cord assembly	

Tote Tank T505-T510

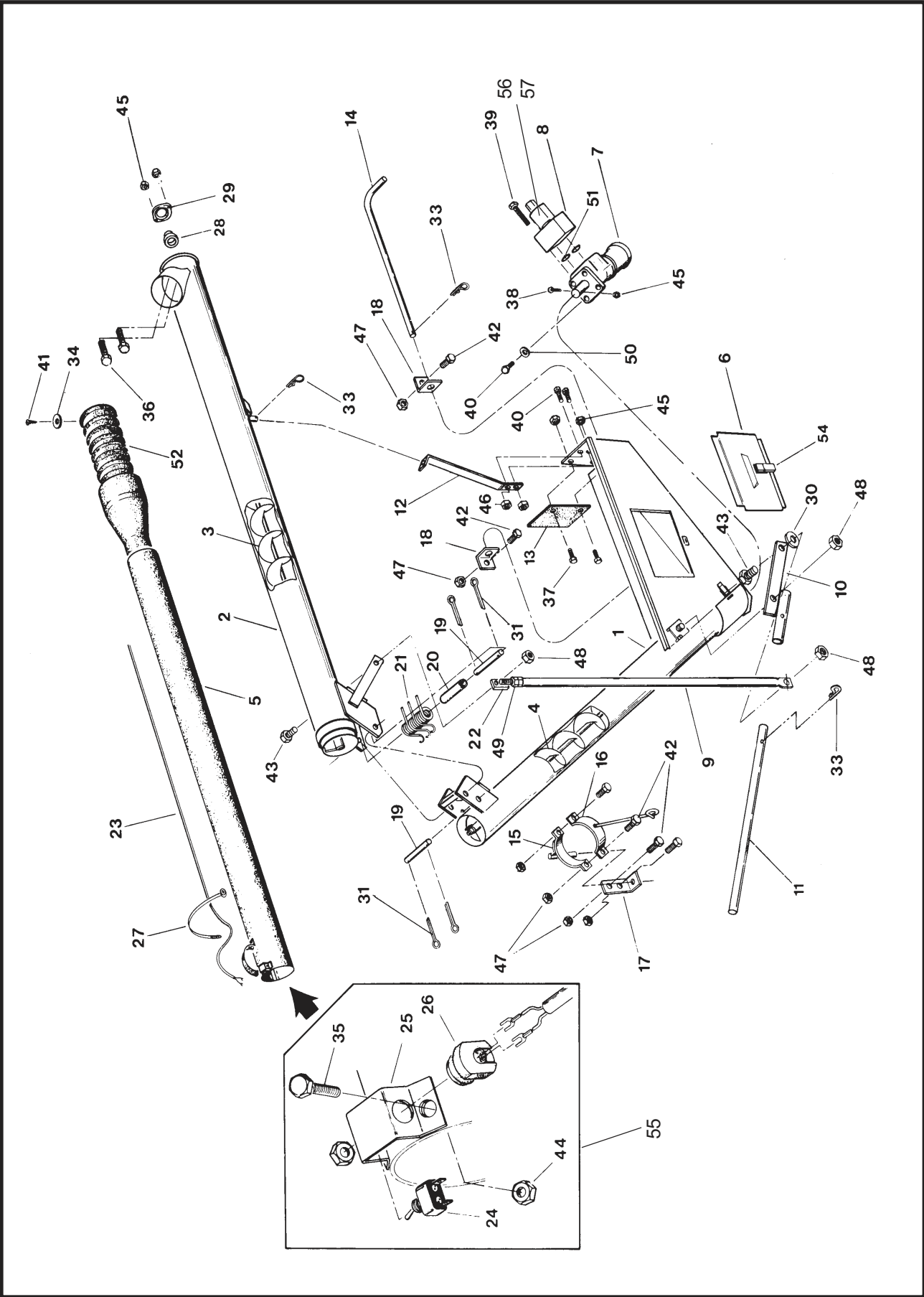


Tote Tank T505-T510

REF. NO.	PART NO.	PARTS DESCRIPTION	NO. REQ'D
1	18275	Lid frame T505	1
1	18276	Lid frame T506	1
1	18277	Lid frame T507	1
1	18278	Lid frame T508	1
1	18279	Lid frame T509	1
1	18280	Lid frame T510	1
2	18281	End frame (frt. & rr.)	2
3	18282	Side panel r.h. T505	1
3	18283	Side panel r.h. T506	1
3	18284	Side panel r.h. T507	1
3	18285	Side panel r.h. T508	1
3	18286	Side panel r.h. T509	1
3	18287	Side panel r.h. T510	1
4	18288	Side panel l.h. T505	1
4	18289	Side panel l.h. T506	1
4	18290	Side panel l.h. T507	1
4	18291	Side panel l.h. T508	1
4	18292	Side panel l.h. T509	1
4	18293	Side panel l.h. T510	1
5	18294	Hopper T505	1
5	18295	Hopper T506	1
5	18296	Hopper T507	1
5	18297	Hopper T508	1
5	18298	Hopper T509	1
5	18299	Hopper T510	1
6	18300	Hopper chute	1
7	18301	Rope	1
8	18302	Skid T505	2
8	18303	Skid T506	2
8	18304	Skid T507	2
8	18305	Skid T508	2
8	18306	Skid T509	2
8	18307	Skid T510	2
9	18308	Interior ladder	1
10	18309	Safety rail T505	1
10	18310	Safety rail T506	1
10	18311	Safety rail T507	1
10	18312	Safety rail T508	1
10	18313	Safety rail T509	1
10	18314	Safety rail T510	1
11	18315	Lid T505	1
11	18316	Lid T506	1
11	18317	Lid T507	1
11	18318	Lid T508	1
11	18319	Lid T509	1
11	18320	Lid T510	1
12	18321	Lid pivot arm T505	1
12	18322	Lid pivot arm T506	1
12	18323	Lid pivot arm T507	1
12	18324	Lid pivot arm T508	1
12	18325	Lid pivot arm T509	1
12	18326	Lid pivot arm T510	1
13	18327	Auger tube	1
14	18328	Flighting	1

REF. NO.	PART NO.	PARTS DESCRIPTION	NO. REQ'D
15	18153	Flex hose, 6" only	X
16	18134	2 Section spout w. flex hose	1
17	18329	Flange mount	1
18	18330	Gasket	1
19	18331	Cover flange	1
20	18332	Tube mount	1
21	18333	Intake shield	1
22	18334	Reinforcing plate	1
23	18335	End cap	1
24	18362	Hydraulic motor	1
25	18336	Mounting bracket, lid stabilizer	2
26	18337	Valve mount	1
27	18338	Hydraulic valve	1
28	18342	Protective moulding	1
29	18357	Hydraulic hose	2
30	18152	Spout clamp	3
31	19952	Selftapping screw, #14 x 3/4" type AB	3
32	18339	Roller	2
33	18340	Exterior ladder	X
34	18341	Ladder mounting bracket	X
35	18266	Hydraulic connecting pipe	X
36	18267	Catwalk connector	X
37	19984	Selftapping screw, #14 x 1/2" type B	X
38	19985	Bolt, 1/4" - 20 x 1-1/2", grade 2	X
39	19538	Bolt, 5/16" - 18 x 3/4", grade 2	X
40	19992	Bolt, 5/16" - 18 x 2", grade 8	X
41	19540	Bolt, 3/8" - 16 x 3/4", grade 2	X
42	19986	Shoulder bolt, 3/8" - 16 x 1-5/8"	X
43	19542	Bolt, 7/16" - 14 x 1", grade 5	X
44	19594	Washer locknut, 1/4" - 20	X
45	19595	Washer locknut, 5/16" - 18	X
46	19596	Washer locknut, 3/8" - 16	X
47	19598	Locknut, 7/16" - 14	X
48	19596	Lockwasher, 3/8"	X
49	19463	Hitch pin	X
50	18554	Angle stiffener	

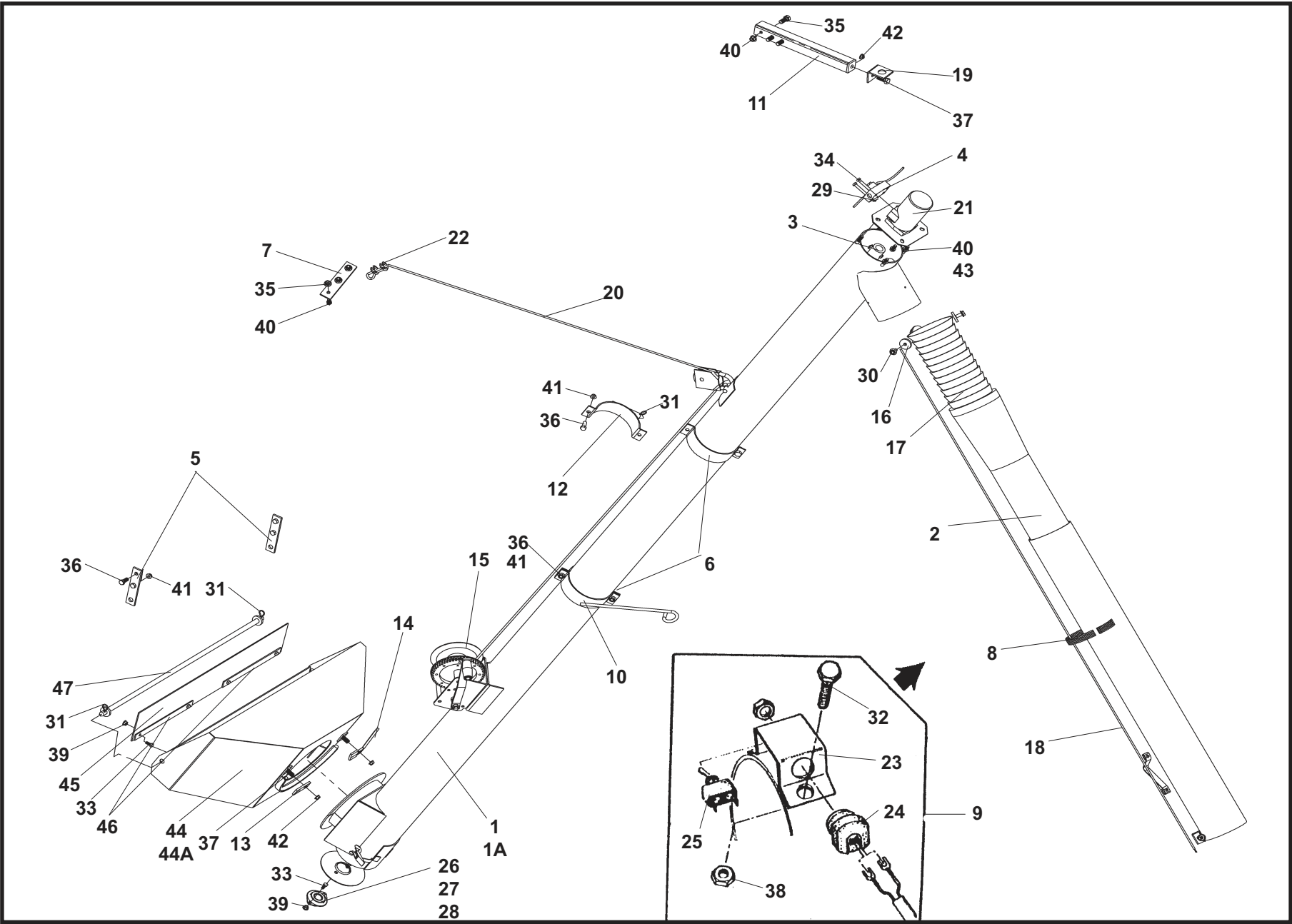
Rear Mount Drill Fill w/Spring Assist, DF 614-3



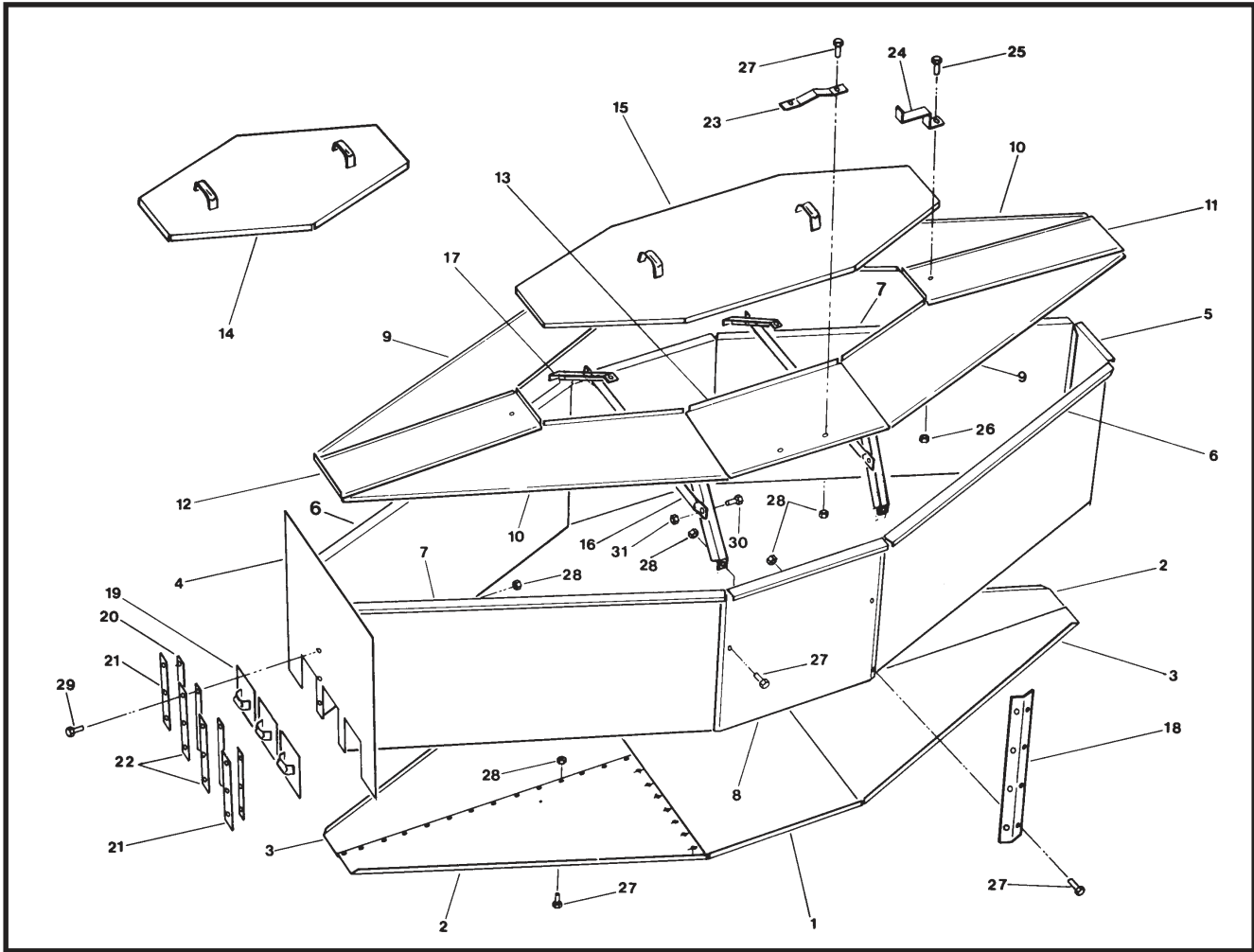
REF. NO.	PART NO.	PARTS DESCRIPTION
1	18680	Lower tube and hopper
2	18681	Upper tube
3	18367	Upper flighting
4	18133	Lower flighting
5	18134	2 Section spout w/flex hose
6	18135	Dump cover
7	18136	Hydraulic motor
8	18137	Solenoid valve
9	18682	Lift arm
10	18683	Lift arm bracket
11	18684	Handle
12	18159	Transport bracket
13	18142	Skirting
14	18160	Mount pin
15	18161	Mount clamp
16	18685	Tube half band w/hook
17	18162	Hanger bracket
18	18163	Mount bracket
19	18145	Pivot pin
20	18164	Sleeve
21	18165	Spring
22	18146	Adjust bolt
23	18147	Electrical harness
24	18148	Toggle switch
25	18149	Switch bracket
26	18150	Cord Grommet
27	18151	Tywrap
28	18817	1" Bearing and lock collar, w/o 2 bolt flange
29	18694	1" Bearing flange, single
30	19966	Washer, 5/8"
31	18155	Cotter pin, 3/16" x 1-1/4"
32		
33	19463	Hitch pin #10
34	18152	Spout clamp
35	19537	Bolt, 1/4" - 20 x 1/2", grade 5

REF. NO.	PART NO.	PARTS DESCRIPTION
36	19538	Bolt, 5/16" - 18 x 3/4", grade 2
37	18091	Bolt, 5/16" - 18 x 1", grade 2
38	19539	Bolt, 5/16" - 18 x 2", grade 2
39	19965	Bolt, 5/16" - 18 x 2-3/4", grade 2
40	19540	Bolt, 3/8" - 16 x 3/4", grade 2
41	19274	Self tapping screw, # 14 x 3/4"
42	19542	Bolt, 7/16" - 14 x 1", grade 5
43	19590	Bolt, 5/8" - 11 x 1-1/2", grade 5
44	19594	Washer locknut, 1/4" - 20
45	19595	Washer locknut, 5/16" - 18
46	19596	Washer locknut, 3/8" - 16
47	19598	Locknut, 7/16" - 14
48	19600	Locknut, 5/8" - 11
49	19864	Hex nut, 5/8" - 11
50	19604	Lockwasher, 3/8"
51	18154	O-ring#112
52	18153	6" Flex hose
53		
54	18168	Toggle latch
55	17475	Switch & cord assembly
56	17578	Solenoid plunger only
57	17343	solenoid coil only
—	18656	DF614-3 carton
58	28528	DF lift arm bundle (Item #9, #11 & #14)

GRAVITY WAGON AUGER, GWA 612/615, GWH 633/644/660



Fertilizer tank DF 350 / DF500



REF. NO.	PART NO.	PARTS DESCRIPTION	NO. REQ'D
1	11579	Floor extension panel (5 ton tank)	1
2	11569	Floor panel A	2
3	11570	Floor panel B	2
4	11576	End gate panel	1
5	11572	End panel	1
6	11571	Side panel A	2
7	11567	Side panel B	2
8	11580	Side extension panel (5 ton tank)	2
9	11568	Top panel A	2
10	11573	Top panel B	2
11	11574	Center panel, top front	1
12	11575	Center panel, top rear	1
13	11581	Extension panel, top (5 ton tank)	2
14	11577	Lid (3-1/2 ton tank)	1
15	11578	Lid (5 ton tank)	1
16	11589	Brace, tube	2
17	11587	Brace, angle	4
18	11582	Connector strip (3-1/2 ton tank)	2
19	11585	Gate	3
20	11588	Shim	4
21	11584	Outer guide, gate	2

REF. NO.	PART NO.	PARTS DESCRIPTION	NO. REQ'D
22	11583	Inner guide, gate	2
23	11591	Lift strap	2
24	11590	Latch	2
25	18091	Bolt, 5/16" - 18 x 1", grade 2	x
26	19980	Locknut, 5/16" - 18	x
27	19537	Bolt, 1/4" - 20 x 1/2", grade 2	x
28	19594	Washer locknut, 1/4" - 20	x
29	19988	Bolt, 1/4" - 20 x 1", grade 2	x
30	19542	Bolt, 7/16" - 14 x 1", grade 5	x
31	19598	Locknut, 7/16" - 14	x
	18372	DF101-3 carton	