

CRARY®

Manufacturing Farm Profitability™

**AG
PRODUCTS**

2025

Pricing

United States

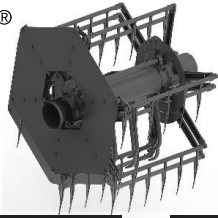
701.282.5520 • 800.247.7335
crary.com • sales@crary.com

Table of Contents

Pricing

Air Reel/Crary Wind System (CWS)	4
Gold'N Cut	6
Big Top Combine Hopper Extensions	8
Hopper Covers & Crop Catchers	11

AIR REEL®



WIND SYSTEM™



AIR REELS

Length	GEARBOX Series II Price
15'	\$19,500
16.5'	\$20,000
17.5'	\$20,200
18'	\$20,400
20'	\$20,700
22'	\$21,100
22.5'	\$21,200
24'	\$21,400
25'	\$21,600
30'	\$22,600
35' Single flow	\$25,500
35' Dual flow	\$29,300
40' Dual flow	\$36,700
45' Dual flow	\$39,700

***Crary Air Reel and Crary Wind System Series I Gearbox add \$1000**

Brand	Header Model	
AGCO-Gleaner/MF/Challenger	Series 2 - 8 / 9850 / 9750	-
Case IH	1010 / 1020 / 2020 / 3020 Double Drive	-
John Deere	900 / 900F / 900D	-
New Holland	960/970/973 / 73C / 74C / 740 Double Drive	-

SPEED SENSOR KITS FOR AIR REEL

26202	Speed Sensor Gear Kit Agco	\$135
53012	Speed Sensor Gear Kit – CAT Lexion	\$135
27627	Speed Sensor Gear Kit – JD 600 Series	\$135
25964	Speed Sensor Gear Kit – JD Hex 200/900 Series	\$340

CIH 3020/NH740 Air Reel's require Reel Lift Cylinder Kit, (PN: 54203). See next page.

CIH 2020/NH74C Air Reel's require Hydraulic Hose (PN: 18692-00). See next page.

Crary® Industries, Inc. will not warrant any Crary air system installed and/or used with a combine equipped with Hilco Leveling Systems unless configuration is approved and documented by a Crary Regional Manager prior to sale.

Hilco models may require additional Kits, contact Crary Sales for pricing.

CWS (CRARY WIND SYSTEM)

Length	Gearbox Series II	Belt Drive
15'	\$15,400	N/A
16'	\$15,700	N/A
18'	\$16,200	N/A
20'	\$16,500	\$15,400
22'	\$16,900	\$15,800
25'	\$17,400	\$16,300
30'	\$18,000	\$16,900
35' Single Flow	\$19,000	\$17,900
35' Dual Flow*	\$22,800	N/A
40' Single Flow	\$20,000	\$18,900
40' Dual Flow*	\$23,800	N/A
45' Single Flow	\$21,700	\$20,600
45' Dual Flow*	\$25,600	\$31,210
50' Dual Flow*	\$27,300	\$33,110

*Triple Reel platforms add \$1100.00.

See next page.

For a downloadable form to request an Air Reel or CWS quote, follow the link below:
<http://support.crary.com/pdfs/dealer-air-system-quote-form.pdf>



AIR REEL[®] WIND SYSTEM[™]

KITS, HOSES, ASSEMBLY AND SET UPS

Part #	Description	Price
JOHN DEERE KITS		
53948	JD Divider Extension Kit	\$200
52116	JD600 Lift Cylinder Kit	\$940
50867	JD630FD/730FD Draper Brush Kit	\$850
50855	JD635FD/735FD Draper Brush Kit	\$970
50819	JD640FD/740FD Draper Brush Kit	\$1,090
50859	JD645FD/745FD Draper Brush Kit	\$1,210
50820	JD600FD Brush Kit OPT. MT. (For 2015 & older)	\$200
55835	JD HDF/HDR 35' Draper Brush Kit	\$970
55840	JD HDF/HDR 40' Draper Brush Kit	\$1,090
55845	JD HDF/HDR 45' Draper Brush Kit	\$1,210
55850	JD HDF/HDR 50' Draper Brush Kit	\$1,460
MACDON KITS		
50391	FD1/FD2/FD70/FD75 30' Brush Kit	\$850
50392	FD1/FD2/FD70/FD75 35' Brush Kit	\$970
50393	FD1/FD2/FD70/FD75 40' Brush Kit	\$1,090
55501	FD1/FD2/FD70/FD75 41' Brush Kit	\$1,210
55505	FD1/FD2/FD70/FD75 45' Brush Kit	\$1,210
55500	FD1/FD2/FD70/FD75 50' Brush Kit	\$1,460
52000	AGCO 9250/55/9300 25/30/35' Draper Brush Kit	\$970
52005	AGCO 9250/55/9300 40' Draper Brush Kit	\$1,090
55666	AGCO 9250/55/9300 45' Draper Brush Kit	\$1,210
55660	AGCO 9250/55/9300 50' Draper Brush Kit	\$1,460
BYPASS AIR KITS		
29884	Neutral Driveshaft Kit (6 spline)	\$250
53106	Neutral Driveshaft Kit (21 spline)	\$270
53107	Neutral Driveshaft Kit (1-1/8" hex)	\$270
54740	Neutral Driveshaft Kit CIH3020 (Pre-5000)	\$370
54715	Neutral Driveshaft Kit CIH3020 (5000-9000)	\$370
CWS CUSTOM COLOR*		
	Custom Color*	\$1,090
Green Manifold – Yellow Drop Tube		
INSTALL COSTS (DOES NOT INCLUDE BRUSH KITS)		
22831	Air Reel Setup (Approx. 25 hrs)	\$2,950
53100-00	Air Reel Dual Flow Setup (Approx. 28 hrs)	\$3,350
26128-00	CWS Setup (Approx. 18 hrs)	\$2,590

Part #	Description	Price
54321-00	CWS Dual Flow Setup (Approx. 20 hrs)	\$2,990
52328	Split Reel Dual Flow Setup (Approx. 32 hrs, We do not install Brush Kit)	\$3,890
55082	Brush Kit Install	\$380
CASE IH AND NEW HOLLAND KITS		
54311	CIH3020/NH740 Divider Extension Kit	\$200
51882	CIH3020/NH740 Reel Lift Cylinder Kit	\$940
18692-00	Hydraulic Hose .5" x 75" for CIH 2020s & NH 74C – 2 required	\$56
CWS DUAL FLOW KITS		
	35' Dual Flow Retro Kit	\$3,800
	40' Dual Flow Retro Kit	\$3,800
	45' Dual Flow Retro Kit	\$3,900
Call to determine availability		
MISCELLANEOUS KITS		
50384	Dual Flow Feederhouse Chaff Reduction	\$145
55530	Single Flow Feederhouse Cleaner	\$350
55588	Solar Remote Mount Kit	\$535
*Control not included		
30349-00	Switch & Remote, CWS/FAR Activator Control Assembly	\$347
24493	Gearbox/Fan Extension Kit	\$710
Needed to raise fan above header for better clearance between combine tires & header (typically for heads less than 20' and using duals)		
51476	Transport Support Bracket Kit	\$255
JD 630F CONVERSION TO SERIES II GEARBOX		
54930	Series II Gearbox - Use existing Fan	\$2,585
54552	Kit, Series II Gearbox Mount (JD600F)	\$900
50514	Kit, Series II RH DR. JD600F (30', 35')	\$1,230
29986-00	Kit, 21SPL/6SPL L Driveline	\$1,250
***	JD 630F Conversion to Gen II	\$5,965
JD 635F CONVERSION TO SERIES II GEARBOX		
54930	Series II Gearbox - Use existing Fan	\$2,585
54552	Kit, Series II Gearbox Mount (JD600F)	\$900
50514	Kit, Series II RH DR. JD600F (30', 35')	\$1,230
29856-00	Kit, 21SPL/6SPL XL Driveline	\$1,250
***	JD 635F Conversion to Gen II	\$5,965

Item #	Description	Price
GOLD GUARD		
	Standard Guards (7221, 7222, 7225, 7228, 7229)	\$28.95 each
53813	Kit, 7222 Box of 25 Guards	\$595.00/box
53814	Kit, 7225 Box of 25 Guards	\$595.00/box
53815	Kit, 7228 Box of 25 Guards	\$595.00/box
53816	Kit, 7229 Box of 25 Guards	\$595.00/box
SICKLE SECTIONS		
	BearCUT (10 to a box)	\$34.50/box
	BearCUT Single Point (100 to a box)	\$325.00/box
	Top-Serrated or Under-Serrated Section (for hay equipment) (10 to a box)	\$34.50/box
	Top-Serrated or Under-Serrated Section (for hay equipment) (100 to a box)	\$325.00/box
	KingKut Section (10 to a box)	\$34.50/box
	KingKut Section (100 to a box)	\$325.00/box
	Stalk Raptor Section (10 to a box) NEW!	\$34.50/box
	Stalk Raptor Section (100 to a box) NEW!	\$325.00/box
HARDWARE FOR SICKLES		
17209	Box, 7/32"x 5/8" bolts/nuts(50)	\$20.55/box
17210	Package, 7/32"x 1" bolts/nuts(25)	\$13.85/box
17211	Box, 7/32"x 1-1/4" bolts/nuts(25)	\$15.70/box
17212	Box, 7/32" locknuts(100)	\$23.25/box
16941	Box-50, 7/32"x5/8" csk. bolts/nuts	\$23.20/box
16942	Box-25, 7/32"x1" csk. bolts/nuts	\$29.75/box
HOLD DOWN CLIPS		
	Standard Spring Loaded Hold Down (Minimum Qty 5 ea)	\$21.90 each
	High Arch Head Area Spring Loaded Hold Down (Minimum Qty 5 ea)	\$23.45 each
	Replacement Wear Pads for Hold Down (Minimum Qty 10 ea)	\$2.50 each
22523	Shim, Spacer(.010)	\$2.20 each
22524	Shim, Spacer(.024)	\$1.05 each
21256	Shim, Spacer(.036)	\$2.84 each
21592	Shim, Spacer(.105")	\$2.05 each
21842	Shim, Spacer(.188)	\$3.50 each
SECTION LINKS WITH NUTS		
50700	Kit, Section Link 2.00	\$90.00
50701	Kit, Section Link 2.06	\$90.00
50702	Kit, Section Link 2.13	\$90.00
WEAR PLATES		
17329	6" universal	\$7.00 each
16658	12" universal	\$9.80 each
24261	6" Case/IH 1020 headers with #7229 Gold Guards	\$6.50 each

*Specialty guards, Sections, and Hold downs may have different pricing than the above section pricing.

To configure a cutting system, please visit the link below:

http://manuals.crary.com/cgi-bin/gnc_cfg.cgi

Finding the perfect cutting system just got easier!
 Try Crary's® Cutting System Search at crary.com under Product Support
 Prices, specifications and options are subject to change without notice.
 FOB West Fargo, ND U.S. Funds Printed in the U.S.
 Crary Industries, Inc. has the right to refuse any order(s) submitted.



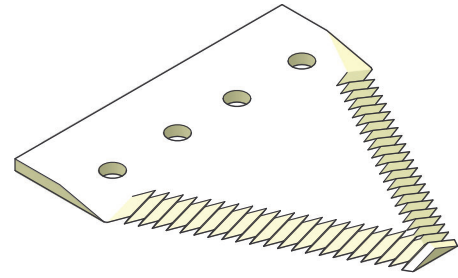
CUTTING PARTS

For Combines & Hay Machines

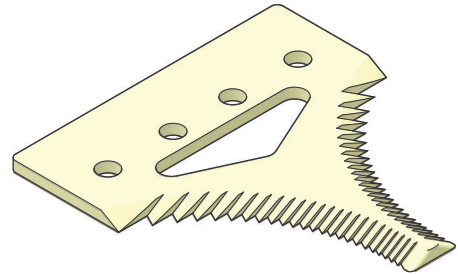
GOLD'NCUT™ / KINGKUT™ / STALK RAPTOR™

Includes: Gold Guards and mounting hardware.
ThunderBOLT Sickle, wear plates and springloaded hold downs.
(Without Sickle Head)

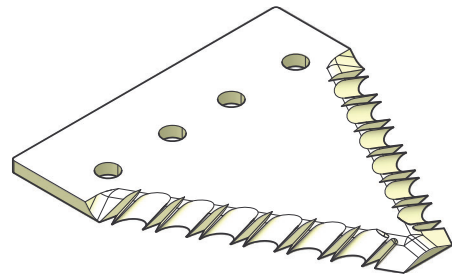
Length	Gold'N Cut	ThunderBOLT Sickle
5'	\$870	\$380
6'	\$1,010	\$400
7'	\$1,210	\$420
8'	\$1,340	\$440
9'	\$1,360	\$470
10'	\$1,380	\$490
11'	\$1,460	\$550
12'	\$1,600	\$530
12.5'	\$1,640	\$550
13'	\$1,700	\$560
14'	\$1,775	\$570
14.5'	\$1,830	\$580
15'	\$1,900	* \$590
16'	\$1,910	\$600
16.5'	\$1,950	* \$610
17'	\$1,980	\$620
17.5	* \$2,030	\$630
18'	\$2,070	\$640
19'	\$2,150	\$650
19.5'	\$2,190	\$660
20'	* \$2,220	* \$670
21'	\$2,380	\$680
22'	\$2,480	\$710
22.5'	* \$2,550	* \$750
24'	\$2,670	\$770
24.5'	\$2,700	\$780
25'	* \$2,730	* \$800
26'	\$3,010	\$820
27'	\$3,090	\$830
30'	* \$3,350	* \$850
35'	* \$3,700	* \$900
36'	\$3,730	\$960
39'	\$3,750	\$990
40'	* \$3,850	* \$1,060
42'	\$3,990	\$1,100
45'	* \$4,620	\$1,240



BearCut™



KINGKUT™



STALK RAPTOR™

*System Available in Stalk Raptor

Honey Bee Pricing: call for pricing and availability.

BIG TOP™ COMBINE HOPPER EXTENSIONS

JOHN DEERE	Item #	Price	Total Bushels	Item #	Price	Total Bushels
	STANDARD EXTENSION			LARGE EXTENSION ***		
8820	23766	\$2,280	282	N/A	N/A	N/A
Walker 9400, 9410, 9450, CTS, 9500, 9510, 9550, 9560	24545*	\$2,360	272	24543	\$1,200	337
*Models prior to 2002 also order auger cover	25583	\$140	—	—	—	—
Walker 9600, 9610, 9650, 9660	24546*	\$2,360	300	24544	\$1,200	370
*Models prior to 2002 also order auger cover	25583	\$140	—	—	—	—
STS 9560, 9570, 9650, 9660, 9670, 9750, 9760, 9770, 9860, 9870 (order handrail separately below)	25434	\$2,760	310	25436	\$1,265	400
STS Handrails Order Separately						
STS Models 2007 and later	29814	\$210	—	—	—	—
9660, 9760, 9860 STS 2006	29092	\$210	—	—	—	—
9560 STS 2006	29091	\$210	—	—	—	—
STS Machines 2005 and earlier	29090	\$210	—	—	—	—
*Muffler Kit for 9860/9870 2006 & later	29203	\$190	—	—	—	—
STS 9660, 9670, 9760, 9770, 9860, 9870 with OEM extension and a high capacity unloading auger	Not required	—	—	29275	\$2,430	400
S-Series S660, S670 with OEM extension – manual fold only; Factory extension - rounded corner	Not required	—	—	54448	\$2,430	Adds 100 to OEM
S-Series S660, S670, S760, and S770 with OEM extension – manual fold only; Factory extension – squared corner	Not required	—	—	50269	\$2,430	Adds 100 to OEM
S-Series S680, S690, S780, and S790 with OEM extension – manual fold only	Not required	—	—	50369	\$2,430	Adds 100 to OEM
				POWERFOLD EXTENSION		
S-Series S660, S670, S760, and S770 – power fold	Not required	—	—	50637	\$850	Adds 100 to OEM
S-Series S680, S690, S780, and S790 with OEM extension – power fold	Not required	—	—	55600	\$2,380	Adds 100 to OEM
Stronger and Heavier Cylinder for S-Series Cylinder, S-Series– power fold (2023 & newer, Will not convert manual fold to power fold, only replaces factory cylinder of existing power fold)				55709	\$397	
X-9 Series (1000 and 1100)	Not required	—	—	55511	\$2,380	Adds 130 bushels to X-9 1000, and 90 bushels to X-9 1100
X-9 Series (1100) requires additional brackets				55197	\$142	

N/A = Not Available

*** **IMPORTANT:** The Large Extension requires the Standard Extension to be installed first, unless noted as Not Required.

BIG TOP™ COMBINE HOPPER EXTENSIONS

CASE IH	Item #	Price	Total Bushels	Item #	Price	Total Bushels
	STANDARD EXTENSION			LARGE EXTENSION ***		
1660, 2166, 2366	29944**	\$2,190	285	24579	\$1,245	330
**Base adapter needed to install on a 60 & 66 Series	24580	\$385	—	—	—	—
1460, 1480, 1660, 1680, 1688, 2166, 2188 (Large Only) – for Big Tops made before Serial #5527				23943	\$1,245	330
1480, 1680, 1688, 2188, 2377, 2388, 2577,2588	29944	\$2,190	325	24579	\$1,245	370
7010, 7120, 7230, 7240, 7250, (315 BU) with OEM Extension – black – manual fold only	Not required	—	—	54288	\$2,430	390
8010, 8120, 8230, (350 BU), 9120, 9230, (350 BU) with OEM extension – black – manual fold only	Not required	—	—	54274	\$2,430	450
7240 (410 BU), 8240, 9240, 7250 (410 BU), 8250, and 9250, with OEM extension – black – manual fold only	Not required	—	—	50432	\$2,430	520
5088, 5130 (250 BU), 5140 (250 BU), and 5150 with OEM extension – black – manual fold only	Not required	—	—	54289	\$2,430	335
6088, 7088, 5130 (300 BU), 6130, 7130, 5140 (300 BU), 6140, 7140, 5150, 6150, and 7150 with OEM extension – black – manual fold only	Not required	—	—	53408	\$2,410	375
				POWERFOLD EXTENSION		
7240 (410 BU), 8240, 9240, 7250 (410 BU), 8250, and 9250 with OEM extension – Auto-sealing only				52330	\$2,385	Adds 65
7240 (410 BU), 8240, 9240, 7250 (410 BU), 8250, and 9250 with OEM extension – (2023 & Later)				55969	\$2,385	Adds 65

NEW HOLLAND	Item #	Price	Total Bushels	Item #	Price	Total Bushels
	STANDARD EXTENSION			LARGE EXTENSION ***		
TR85-TR89	24152	\$2,240	260	N/A	N/A	N/A
Muffler Kit for Ford Engine	24153	\$95		—	—	—
Muffler Kit for Genesis Engine	24154	\$95		—	—	—
TR95-TR99	24152	\$2,240	330	N/A	N/A	N/A
CR6.80, CR6.90, CR6090, CR7.90(315), CR7090, CR8080, CR9040(315 BU), CR9060, CR9065, CR940(300/315 BU), CR960, CX8070 with OEM extension - manual fold only	not required	—	—	54288	\$2,430	420
CR7.90(350 BU), CR9070, CR9080, CR8090(350 BU), CR9090(350 BU), CR970, CR980, CX8.80, CX8.90, CX8080, CX8090 with OEM extension - manual fold only	not required	—	—	54274	\$2,430	450
CR8.90, CR9.90, CR10.90 CR8090(410 BU), CR9090(410 BU) with OEM extension - Tier 4B Final-Black – manual fold only	not required	—	—	50483	\$2,430	520

N/A = Not Available

*** **IMPORTANT:** The Large Extension requires the Standard Extension to be installed first, unless noted as Not Required.

COMBINE HOPPER EXTENSIONS

CHALLENGER	Item #	Price	Total Bushels	Item #	Price	Total Bushels
	STANDARD EXTENSION			LARGE EXTENSION ***		
	660B, 670B	53509	\$2,700	300	53522/53530	\$1,265/\$1,380
680B**	53509**	\$2,700	305	53522/53530	\$1,265/\$1,380	375/415

**Must purchase 53651 Class 8 adapter kit – \$535

GLEANER	Item #	Price	Total Bushels	Item #	Price	Total Bushels
	STANDARD EXTENSION			LARGE EXTENSION ***		
	R52*, R62*, R72* (Universal Fit)	24491	\$2,235	315	24610	\$855
A66, A76	53509	\$2,700	300	53522/53530	\$1,265/\$1,380	370/415
A85, A86**	53509**	\$2,700	305	53522/53530	\$1,265/\$1,380	375/415

**Must purchase 53651 Class 8 adapter kit – \$535

MASSEY FERGUSON	Item #	Price	Total Bushels	Item #	Price	Total Bushels
	STANDARD EXTENSION			LARGE EXTENSION ***		
	9695, 9795	53509	\$2,700	300	53522/53530	\$1,265/\$1,380
9895**	53509**	\$2,700	305	53522/53530	\$1,265/\$1,380	375/415

**Must purchase 53651 Class 8 adapter kit – \$535

ADDITIONAL OPTIONS

Step	Item #	Price
Big Top, Step Only, JD/CaseIH	27171-12	\$50
Big Top, Step Kit, AGCO	25692-00	\$60

*Universal base frame for all models, larger models will have open space between OEM grain tank sides and Big Top frame.

*** **IMPORTANT:** The Large Extension requires the Standard Extension to be installed first, unless noted as Not Required.

Crary® Industries, Inc. has partnered with Michel's Industry, Ltd. to supply Electric Combine Hopper Covers and Crop Catchers to the U.S.

TRADE DISCOUNT

20% Whole Goods & Parts – All Year

Final net due 30 days after Latest Requested Ship Date (LRSD) or Actual Ship Date (ASD) whichever is later.

3% discount for payment 10 days from LRSD. Note: If payment is made with credit card or virtual card payment, this discount is not available. **Cash, check or wire transfer only.**

HOPPER COVERS

Part #	Product	Description	Fits Part	Price
CASE IH AND NEW HOLLAND (BLACK)				
54238	Case IH/NH Factory	CASE 7010, 7120 & 7230 or New Holland CR-940, -960, -9040, -9060, -8080, -7090, -6090, -9065 & 2010 Newer CX 8070		\$4,790
54239	Case IH/NH Factory	CASE 8010, 8120, 9010, 9120, 8230, 9230 & CR-970, CR-980, CR-9070, CR-9080, 2013 & Older CR-9090, CR-8090 & 2010 or Newer CX 8080 & CX 8090 with Std. Factory Ext.		\$4,920
50428	Case IH/NH Factory	Case 8240, 9240 or NH CR8090 & 9090 2014 or Newer with 410 Bushel Grain Tank & Standard Factory Ext. (Black)		\$4,920
54240	Case IH/NH Fits Crary	CASE 8010, 8120, 9120, 8230, 9230 & CR970, CR9070, CR9080, CR9090, CR8090 Series Combine with Crary Big Top Extensions (Sits on top of Factory Extension) C/W black hardware	26301/54274	\$5,160
54241	Case IH Fits Maurer	CASE 2388, 2188, 1688 & 1680. All Models (Must have Maurer Ext. which Replaces Factory Ext.) 54242 John Deere Fits Maurer JD 9500/9600 with Maurer (Yellow)	9E000005, 9E000011	\$5,160
JOHN DEERE				
54243	John Deere Factory	JD Factory STS 60/70 Series (Yellow)		\$4,920
54248	John Deere Factory	JD Factory STS 60/70 Series (Green)		\$4,920
54595	John Deere Factory	JD Factory S Series 660/670 (Yellow)		\$5,290
54596	John Deere Factory	JD Factory S Series 680/690 (Yellow)		\$5,290
54597	John Deere Fits Crary	JD STS 60/70 Series with Crary (Yellow)	29275	\$5,290
54249	John Deere Fits Crary	JD STS 60/70 Series with Crary (Green)	29275	\$5,160
54319	John Deere Fits Crary	JD STS 50/60/70 with Crary (Yellow)	25434/25436	\$5,160
54597	John Deere Fits Crary	JD S Series 660/670 with Crary (Yellow) No DEF	54448	\$5,290
54598	John Deere Fits Crary	JD S Series 680/690 with Crary (Yellow)	54502	\$5,290
54244	John Deere Fits Maurer	JD STS 50/60/70 Series with a Maurer – replaces factory (Yellow)	9E000001	\$5,160
54247	Conversion Kit Fits Maurer	Maurer STS Tip Up Conversion – <i>Kit is required when Maurer vertical extension is used with Maurer flared extension</i>	9E000002	\$155

CROP CATCHERS

Part #	Product	Price
FITS ALL BRANDS		
54478	John Deere – Green	\$1,190
55037	John Deere – Green Split Flex Draper	\$1,220
54481	Case IH/New Holland/Agco/Other – Black	\$1,190
	Brackets – (Green – 54810, Red – 54811, Yellow – 54812, Black – 54813)	\$170
	Extenders 2' – (Green – 54814, Black – 54817)	\$400
32900-00	Dust Away Plastic Cleaner	\$32



Contact Info

Crary® Industries, Inc.

237 12th St. NW • PO Box 849 • West Fargo, ND 58078

Phone: 800.247.7335 • Fax: 701.282.9522

The Crary Ag Sales Force is your primary contact in all matters relating to Crary Industries, Inc. policies, procedures and all communication from Crary Industries, Inc.

SALES			
Hannah Tanata	Business Unit Director	800.247.7335 x381	hannah.tanata@crary.com
Dean Tong	Eastern Regional Sales Manager	701.371.4256 (mobile)	dean.tong@crary.com
Tim Nelson	Territory Manager – MN, MT, ND, SD,	701.552.1210 (mobile)	tim.nelson@crary.com
Jon Richardson	Territory Manager – KS, NE, Pac West	701.373.5248 (mobile)	jon.richardson@crary.com
Jason Harland	Territory Manager – IA, IL, IN, MO	319.230.6417 (mobile)	jason.harland@crary.com
Evair Rojo	Sales Manager – Latin America and South Africa	+55 14 99 8381028 (WhatsApp)	evair.rojo@crary.com
Brenda Dockter	Sales Coordinator	800.247.7335 x338	brenda.dockter@crary.com
SERVICE			
Bryan Fern	Service Manager	800.247.7335 x364	bryan.fern@crary.com
Luke Scigliano	Customer Service Technician	800.247.7335 x137	luke.scigliano@crary.com
MARKETING			
Nick Chiodo	Marketing Manager	800.247.7335 x395	nick.chiodo@crary.com
Anne Taylor	Marketing Specialist	800.247.7335 x343	anne.taylor@crary.com


Manufacturing Farm Profitability™